

MAIN *the* HVLCSD line

PUBLISHED QUARTERLY BY HIDDEN VALLEY LAKE COMMUNITY SERVICES DISTRICT

A P R I L 2 0 2 3

WELCOME!

Hidden Valley Lake Community Services District has some exciting updates and news to share with you! We continue to provide a concise report of important news and events and how they affect your water and wastewater systems. As always, if you have questions about items in this newsletter, please email them to Penny Cuadras, Administrative Services Manager, at pcuadras@hvlcsd.org. We will respond to your inquiries as soon as possible. In the meantime, we urge you to familiarize yourself with our website, hvlcsd.org. Our website contains a lot of helpful information.

We encourage you to check it out!

DAY-TO-DAY OPERATIONS



CALIFORNIA EXPANDS ELIGIBILITY FOR LOW-INCOME WATER BILL ASSISTANCE TO INCLUDE RELIEF FOR CURRENT BILLS

Low Income Household Water Assistance Program expansion increases the number of households eligible for residential water and wastewater bill assistance throughout the state.

On 3/15/23 The California Department of Community Services and Development announced the expansion of eligibility for the Low Income Household Water Assistance Program (LIHWAP) to include all eligible low-income households, regardless of whether they are current on their bill or have a past due balance. LIHWAP is a limited term, federally-funded program that provides financial assistance to help low-income Californians struggling to pay residential water and wastewater bills.

For more information on this program click on the following link:

<https://csd.ca.gov/waterbill>

HIDDEN VALLEY LAKE
COMMUNITY SERVICES DISTRICT
19400 HARTMANN ROAD
HIDDEN VALLEY LAKE, CA 95467
P: 707.987.9201
F: 707.987.3237
www.hvlcsd.org

FINANCIALS

At our Board of Director's February meeting, our love for clean drinking water was almost palpable! Staff presented a revised Projects Update to the Board. A Projects Update is the District's opportunity to highlight the progress of various community-wide projects and update on funding. The new Projects Update includes photos of the project sites, visual metrics, and material that is easy to understand.

SEASONAL WEATHER

We can finally put winter behind us! Lake County received an exceptional amount of precipitation this season. The community experienced a snowstorm with snowfall ranging from 4 to 12+ inches in places that resided about 1,000 to 2,100 feet in elevation. The District was fortunate to have avoided any flooding, thanks to the flood-fighting efforts of residents, CSD staff, and HVLA staff during the less stormy months. As we transition into spring, we look forward to more sunshine and to continue taking preventative measures towards flooding in preparation for next season. We strongly recommend everyone does the same. Now is also the time to begin thinking about how to incorporate "home hardening" practices

and creating defensible space around your home to protect against wildfires. Home hardening is a method of integrating fire-resistant materials in properties, homes and critical infrastructure to reduce the risk of destruction. Small measures can be taken like planting low-lying vegetation (at least 10 feet from your foundation) or clearing debris from your gutter on a regular basis. As a county that lies in one of California's high fire-threat zones, it is crucial to think about key steps all of us can take to protect ourselves against wildfires.



Photo by Mr. Logan Mahoney

A rare sight! Where there's snow, there's bound to be water run-off and possibilities for flooding. Is your property prepared? ▶

PROJECTS

Advanced Metering Infrastructure (AMI) —Save Water, Pay Less!

- Have you spotted Wally the Water Droplet? If so, it is likely you spotted our campaign encouraging everyone to create an account on **EyeOnWater**, available both as a website and mobile app. Field operators have been busy installing new water meters in many neighborhoods, as this community-wide water infrastructure improvement project directly benefits you and your CSD. Advanced Metering Infrastructure, also known as AMI, allows you to identify and fix leaks quickly. Importantly, the meter-reading process is transformative for the District—our staff no longer has to manually read every meter in the community, which allows management to direct them towards more vital projects.

Supervisory Control And Data Acquisition (SCADA)

- We are pleased to announce that the Board of Directors has authorized the next step forward in the (SCADA) refresh project by confirming our new engineering consultant, West Yost Associates. CSD will soon be able to implement crucial improvements to water and wastewater controls and network. A kick-off meeting launched this project in mid-February.

WATER STORAGE TANKS

- Out with the old, in with the new! The District is making great progress with its Water System Storage Reliability and the Defensive Space and Ignition Resistance projects. We are thrilled to announce that we received 60% of the Engineering Design Packages for both projects, including maps of how the tanks will sit on-site. The Design Phase is critical because it serves as the instruction manual for the construction contractor. In just a few months, we will be ready to get our first shovel in the ground. It is all part of our continuing hard work to achieve our Mission of “protecting our community’s water!”



The 56+ year-old water tank in Unit 9 scheduled for replacement.

MAINLINES

- With an Award of Contract for the designs of the Water Distribution Reliability project issued to Coastland Engineering LLP, we are pleased to announce that it is now underway. Staff has labored over the last several years to track water loss

in the community, including data supporting AMI. Every year, service orders are reviewed to develop a database, seeking to identify key areas that are in need of replacement.

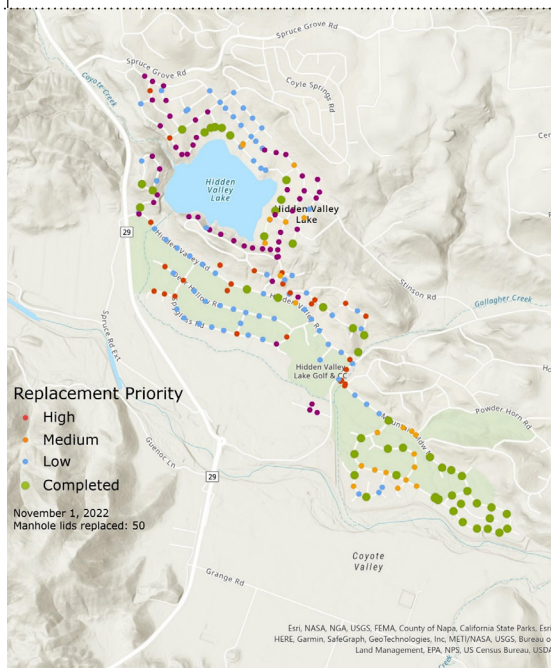
WORKFORCE DEVELOPMENT

As we plan for the CSD’s future, we look forward to identifying and implementing innovative technologies and strategies to help strengthen our existing infrastructure. Advanced Metering Infrastructure (AMI) is streamlining the meter reading process, but there is much more to the delivery of safe, clean drinking water. The trenchless installation of water pipes such as Cured in Place Lining (CIPP) is one of several avenues the CSD is pursuing to fortify water delivery to your home. This method places a pipe within another pipe without any destructive construction that could potentially disturb other infrastructure. Our field operators are learning the specialized skills to execute technologies like CIPP and pipe bursting to prevent the loss of this precious resource on the way to your house. With all this potential at our doorstep, we are grateful to have the opportunity to build a skilled workforce in this rural region, developing expertise in the water sector as they support the implementation of these projects.

spotlights

GEOGRAPHIC INFORMATION SYSTEMS

With the guidance and hard work of our Water Resources Specialist, Hannah, the District has developed an excellent Geographic Information Systems (GIS) database that is used to map and catalog different aspects of our water systems. The spatial analysis software primarily allows us to create maps to pinpoint water and wastewater infrastructure through geolocation. This provides insights to asset locations and can help staff and engineers make better informed decisions when it comes to infrastructure and improvements.



LEAK LOGGER

As water and wastewater infrastructure ages, it becomes at risk to failures including pesky leaks. The District now has a Leak Logger! It’s a tool that has highly sensitive microphones to detect a leaking pipe’s unique sound. Attached at either end of the pipe, the logger’s microphones pinpoint exactly where the leak is occurring. This feature helps speed the repair process and avoids any unnecessary digging of gravel and concrete! CivicSpark Fellow, Jacob, has performed preliminary test runs with our Leak Logger and looks forward to teaching the rest of the field staff how to use it.