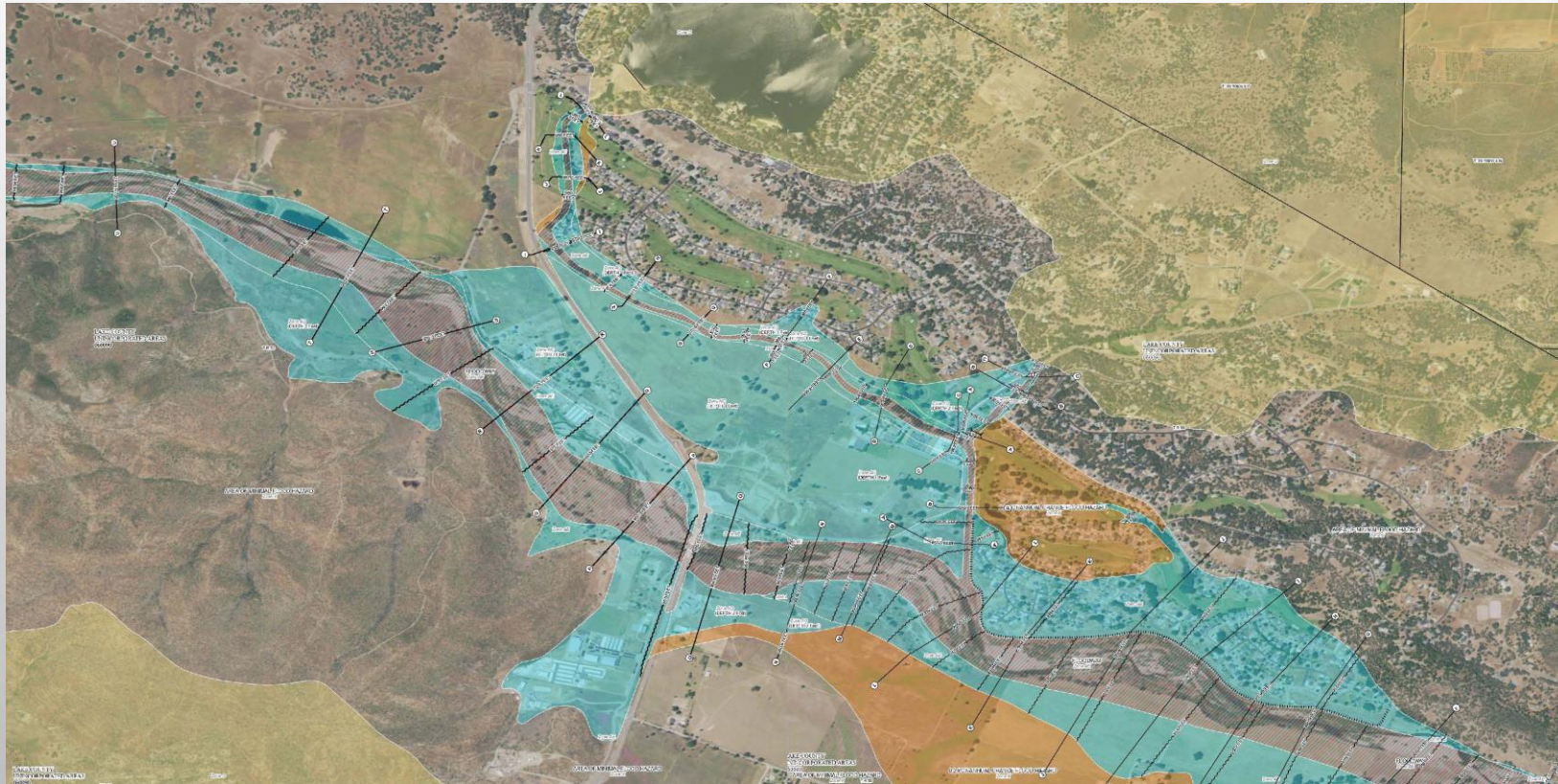


# PROTECTING OUR COMMUNITY

## SAVING THE PUTAH CREEK LEVEE

### MAKING FLOODS HISTORY



# THE THREAT: FLOODING THE COMMUNITY



- THE PUTAH CREEK LEVEE BOTH PROTECTS AND EXACERBATES FLOODING IN OUR COMMUNITY.
- IN 1998, THE LEVEE WAS DE-ACCREDITED BASED ON GOVERNMENT CODE 44-CFR-65-10
- TO FEMA THAT MEANS THAT THERE IS NO LEVEE.
- DE-ACCREDITATION INCREASED FLOOD INSURANCE RATES
- RESIDENTS ARE ALL TOO AWARE OF REPETITIVE FLOODING OCCURRING NUMEROUS TIMES IN THE RECENT PAST.
- WILDFIRES, LOT DEVELOPMENT AND CLIMATE CHANGE WILL CONTINUE TO WORSEN FLOODING.

# THE IMPACT DEVASTATING CONSEQUENCES



- OVER 300 HOMES COULD BE FLOODED, DISPLACING RESIDENTS AND CAUSING SIGNIFICANT PROPERTY DAMAGE.
- CRITICAL INFRASTRUCTURE, INCLUDING ROADS AND UTILITIES, COULD BE COMPROMISED.
- EMERGENCY RESPONSES WOULD BE HAMPERED ENDANGERING LIVES AND LIVELIHOODS.
- LET'S BE PROACTIVE! WE CANNOT WAIT TO BE REACTIVE TO A DISASTER THAT COULD EASILY COST MORE THAN THE FIX.

# THE POTENTIAL COST OF INACTION



- FAILURE TO ADDRESS THIS ISSUE COULD EXPOSE BOARDS TO POTENTIAL LITIGATION FROM AFFECTED HOMEOWNERS.
- LEGAL FEES AND SETTLEMENTS COULD INCUR SIGNIFICANT FINANCIAL BURDENS.
- THE REPUTATIONAL DAMAGE TO THE BOARD AND THE COMMUNITY COULD BE SUBSTANTIAL.
- FLOOD INSURANCE WILL CONTINUE TO RISE UNTIL FEMA—THE ENTITY UNDERWRITING THE INSURANCE—DECIDES TO NO LONGER SUPPORT REPETITIVE CLAIMS.
- FEMA WILL SUPPORT COMMUNITIES TO ABATE THE ISSUES SO THAT THEY DON'T HAVE TO PAY FOR CLEANUPS.

# THE SOLUTION: STORMWATER MITIGATION PROJECT (SMP)—A SEED GRANT PROGRAM



- INVEST IN SEED GRANTS TO STIMULATE COMMUNITY INVOLVEMENT IN THE \$1 MILLION FIX.
- PARTNER WITH LOCAL ORGANIZATIONS, STATE AGENCIES, AND ENGINEERING FIRMS TO ADDRESS THE ISSUES.
- ENCOURAGE INNOVATIVE AND COST-EFFECTIVE SOLUTIONS FOR LEVEE REPAIR AND REINFORCEMENT.
- LEVEE ACCREDITATION AND DRAINAGE STRUCTURE RETROFITS, INCLUDING ADDITIONAL FLOOD DETENTION BASINS HAVE BEEN IDENTIFIED AS PRIORITIES IN THE STORMWATER MITIGATION PROJECT.
- SEVERAL OPTIONS HAVE BEEN EXPLORED INCLUDING ADDING LARGE DRAINAGE PIPES AT THE END OF THE RETENTION POND THAT WOULD ALLOW DRAINAGE EVEN IN A 100-YEAR FLOWS IN PUTAH CREEK.
- THE SMP ALIGNS WITH LOCAL, COUNTY AND STATE HAZARD MITIGATION PLANS (LHMP).

# SMP POTENTIAL: LONG-TERM BENEFITS



- SEED GRANTS COULD ATTRACT AN ADDITIONAL \$10 MILLION FOR MORE FLOOD REDUCTION PROJECTS.
- A SECURE, ACCREDITED LEVEE PROTECTS OUR COMMUNITY AND INFRASTRUCTURE FOR DECADES TO COME.
- AN ACCREDITED LEVEE INCREASES PROPERTY VALUES AND REDUCES FLOOD INSURANCE COSTS.
- GREENSPACE PROJECTS CAN ADD VALUE TO THE COMMUNITY AND DECREASE FLOODING.
- ONCE FULLY COMPLETED, THE STORMWATER MITIGATION PROJECT WILL INCREASE OUR COMMUNITY'S LEVEL OF FLOOD PROTECTION TO ONLY 1 IN A 100-YEAR CHANCE.

# A CALL TO ACTION



- INVESTING IN THE SEED GRANT PROGRAM (MAY DEADLINE) IS AN INVESTMENT IN OUR COMMUNITY'S FUTURE.
- THE GRANT WILL ALSO INCLUDE ESTABLISHMENT OF OWNERSHIP, ROLES & RESPONSIBILITIES, FEE STRUCTURE & MAINTENANCE.
- PROTECTS OUR HOMES, INFRASTRUCTURE, AND THE WELL-BEING OF OUR RESIDENTS.
- LET'S BE **PROACTIVE!** WE CANNOT WAIT TO BE **REACTIVE** TO A DISASTER THAT COULD EASILY COST MORE THAN THE FIX.
- LET CSD USE ITS ABILITY TO WIN STATE AND FEDERAL GRANTS FOR AN OPPORTUNITY TO WORK TOGETHER IMPROVING HVL.

# WHAT'S AHEAD



- BY TAKING A PROACTIVE STANCE, NOT A REACTIVE OBLIGATION, AND
- BY INVESTING IN THIS COMPREHENSIVE SOLUTION,
- WE ARE NOT MERELY ADDRESSING AN IMMEDIATE THREAT—
- WE ARE INVESTING IN THE FUTURE OF OUR COMMUNITY, ENSURING ITS SAFETY, PROSPERITY, AND RESILIENCE FOR GENERATIONS TO COME.