



# Hidden Valley Lake Community Services District

## Regular Board Meeting

DATE: January 23, 2018  
TIME: 7:00 p.m.  
PLACE: Hidden Valley Lake CSD  
Administration Office, Boardroom  
19400 Hartmann Road  
Hidden Valley Lake, CA

- 1) CALL TO ORDER
- 2) PLEDGE OF ALLEGIANCE
- 3) ROLL CALL
- 4) APPROVAL OF AGENDA
- 5) EMPLOYEE RECOGNITION  
Alyssa Gordon for obtaining her Grade II Water Treatment Certification.
- 6) PRESENTATIONS  
Civic Spark Project update.
- 7) CONSENT CALENDAR
  - A. MINUTES: Approval of the Board of Directors Regular Board Meeting minutes for December 19, 2017
  - B. DISBURSEMENTS: Check # 35057 - # 35146 including drafts and payroll for a total of \$557,212.39
- 8) BOARD COMMITTEE REPORTS  
(for information only, no action anticipated)
  - Personnel Committee
  - Finance Committee
  - Emergency Preparedness Committee
  - Lake Water Use Agreement-Ad Hoc Committee
  - Valley Oaks Project Committee
- 9) BOARD MEMBER ATTENDANCE AT OTHER MEETINGS  
(for information only, no action anticipated)

Other meetings attended
- 10) STAFF REPORTS  
(for information only, no action anticipated)

ACWA State Legislative Committee  
Financial Report  
Administration/Customer Service Report  
Field Operations Report  
General Manager's Report

- 11) DISCUSSION AND POSSIBLE ACTION: Discuss and approve the General Manager to enter into a contract amendment with GHD to complete the Water Balance Report Revision as required by the Central Valley Regional Water Quality Control Board.
- 12) DISCUSSION: Directors research on alternative health benefits for themselves and/or their spouse. (Director Graham)
- 13) DISCUSSION AND POSSIBLE ACTION: Designation of Board President and Vice President for 2018 Calendar Year.
- 14) DISCUSSION AND POSSIBLE ACTION: Assignment of Board Members to Standing Committees for the 2018 Calendar Year.
- 15) PUBLIC COMMENT
- 16) BOARD MEMBER COMMENT
- 17) CLOSED SESSION: The Board will call to order and recess to Closed Session to discuss the following item:  
  
PURSUANT TO CALIFORNIA GOVERNMENT CODE §54957.6: Review of the General Manager's contract provisions.
- 18) ADJOURNMENT

Public records are available upon request. Board Packets are posted on our website at [www.hvlcsd.org/meetings](http://www.hvlcsd.org/meetings)

In compliance to the Americans with Disabilities Act, if you need special accommodations to participate in or attend the meeting please contact the District Office at 987-9201 at least 48 hours prior to the scheduled meeting.

Public shall be given the opportunity to comment on each agenda item before the Governing Board acts on that item, G.C. 54953.3. All other comments will be taken under Public Comment.



# Project Updates

Allow this presentation to serve as a progress report made by the District in terms of project titled Stormflow 2017

Alyssa Gordon, Marina Deligiannis and Jacob Gill

# Refresher

- 1/10/17 Sewer System Overflow
- 7/11/17 Second CVRWQCB NOV letter
- 9/18/17 CiviSpark Fellowship begins
- 10/17/17 CivicSpark Progress Report (BOD Mtg)
- Today

# Manhole Mapping

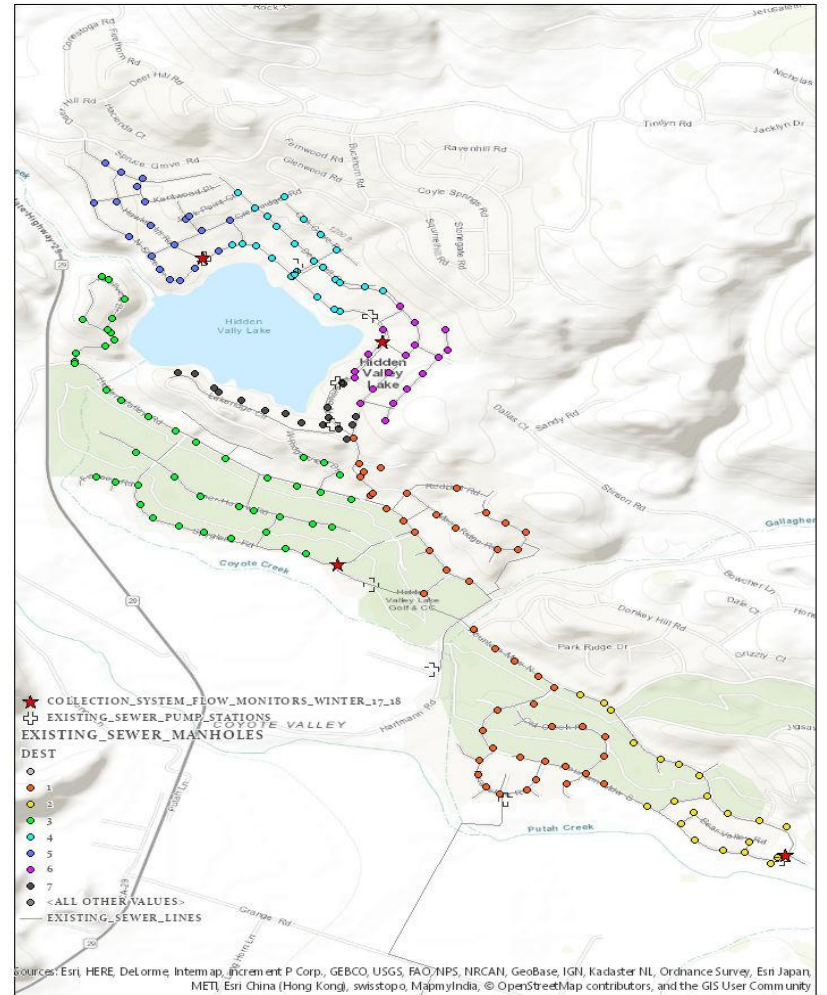
## Progress to date:

- Gathered more data
  - Flow directions
  - Elevations and invert depths
  - Defining “sewer basins”
- Asset management
  - Naming conventions: bringing together old and new systems
  - Visualizing CCTV results
- Inform Flow Monitoring and Nighttime Reconnaissance.

## What's next:

- Verify pipe diameters and material.
- Create a geometric network of collections system.

# Sewer Basins



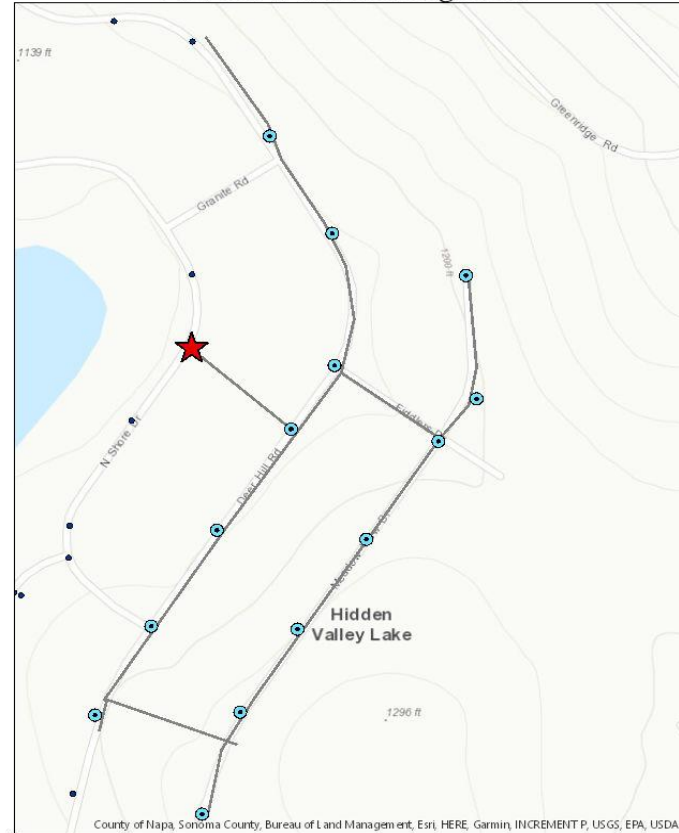
# Flow Meters



# Flow Monitoring

- 4 locations: LS2, LS3, LS
- ~5.9 miles, or 39% of total system

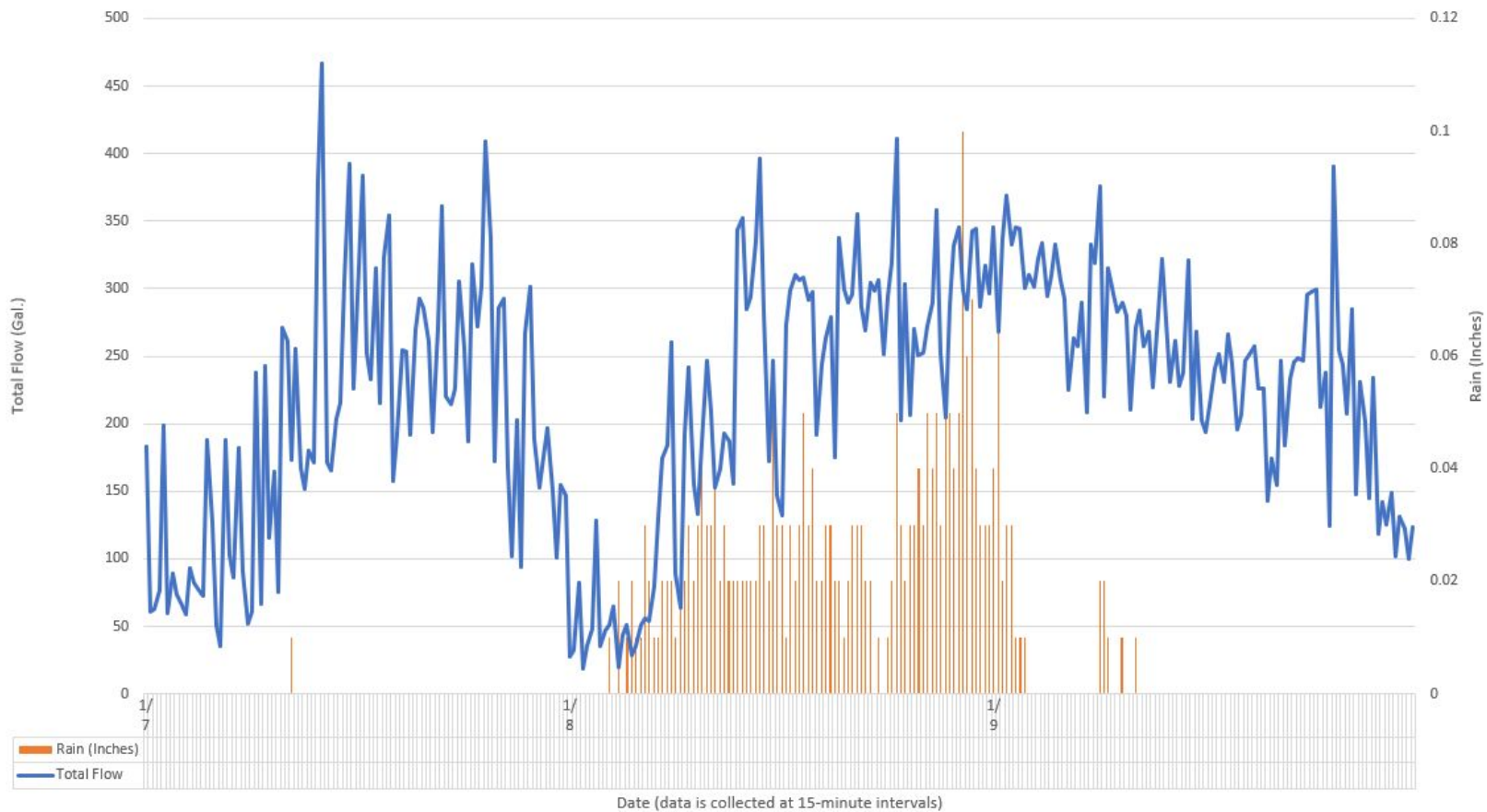
LS6 Flow Monitoring Area



~ 5395 ft of pipe



### LS 6 Flow Monitoring Station, 1/7-1/9



# Nighttime Reconnaissance

## Dates:

- November 14, 2017
- January 11, 2018
- TBD



## 2.5.2 Daytime or Nighttime Field Reconnaissance

HVLCSD plans to conduct field reconnaissance to identify clear water flow in the sewer collection system. The time of day of field reconnaissance should be during a low point on the diurnal curve so that base flow is minimal. Nighttime reconnaissance is ideal for this effort; however, District staffing resources will need to be considered to balance this effort compared to other wet weather season activities. This work should be conducted during the wet season following at least a moderate rain event. It is good practice to do the work the following day, in order to view the sustained flows of infiltration rather than the peak flows from inflow.

For field reconnaissance, staff will typically go out when residential and commercial sewer flow is minimal. They will look inside the manholes to visualize not only infiltration at the manholes, but also the pipes where flow is coming through, and with knowledge of the amount of sewer line upstream, HVLCSD can make judgements about unusually high flow coming through sewer sub-basins. Staff can also approximate flow based on how much flow depth there is. If the manholes are too deep for visual depths from the surface, there are companies that will drop into the manhole and do an instantaneous measurement of depth, either with an inflated plug with a weir or a flow meter. It will be important to correlate field reconnaissance data with the flow meter data monitored after the 2017/18 storm events. Engagement of an outside contractor for confined space entry and direct measurement of clear water flows is not planned for the 2017/18 wet weather season, but may be incorporated into the 2018/19 wet weather season activities to further characterize the location and quantity of I/I within the sewer collection system.

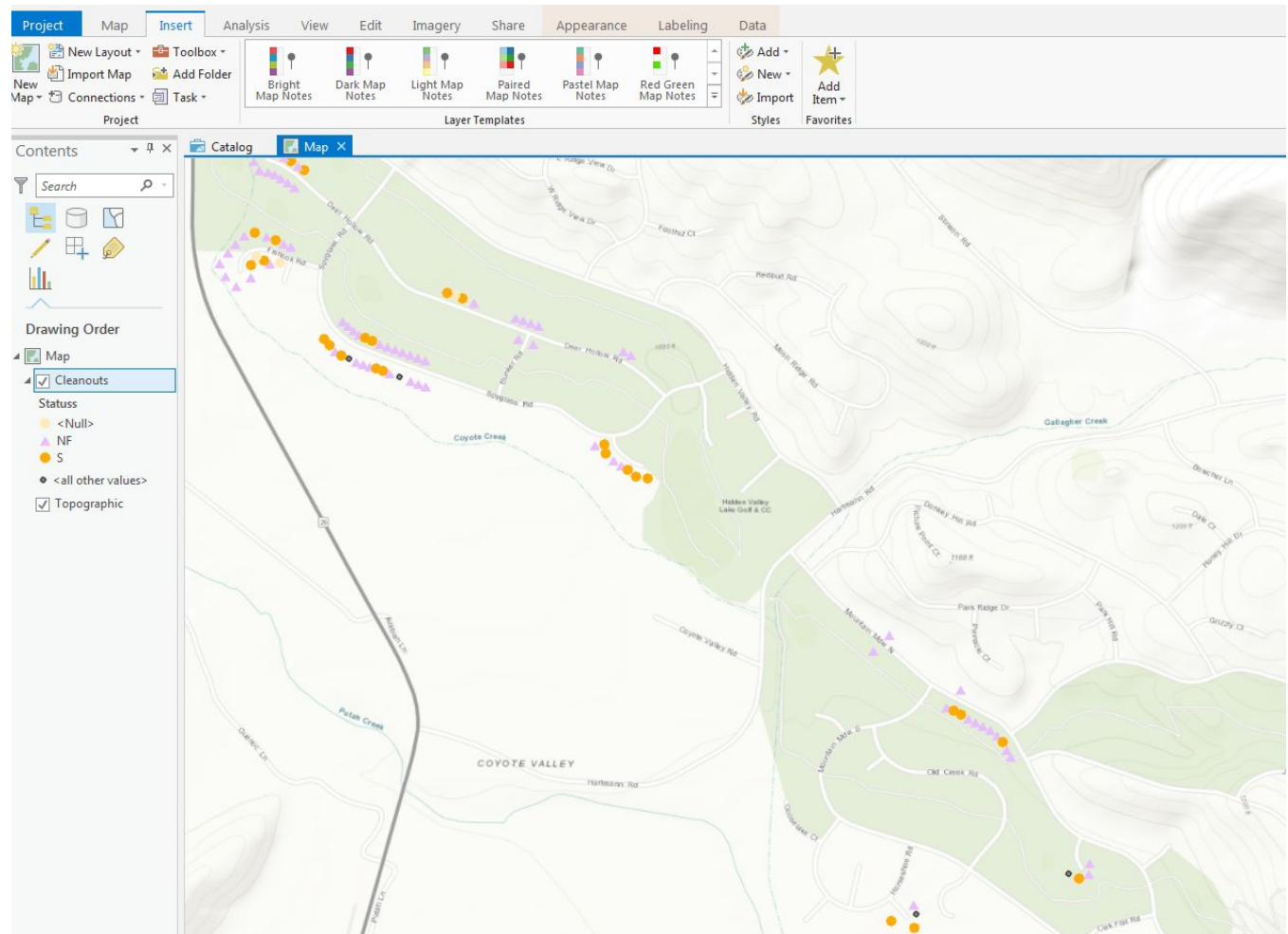
Draft Document – For Discussion Only – Final Version May Differ From Draft

GHD Hidden Valley Lake C.S.D Infiltration and Inflow Work Plan | 11136993 | Page 6

- Hours: 1-5am when residential flow is minimal.
- Record video noting any notable flow/internal issues.
- Upload and organize videos into proper online location and discuss with Dennis results of videos.

# Cleanouts

- 188 cleanouts surveyed in designated “problem areas”.
- Sealed close to 50 cleanouts.
- Created Service Orders for sealed cleanouts.



# SSMP

## Progress to date:

- 10 of 12 required sections completed and under review by HVLCSD staff.
- Updated inventory of sewer equipment and parts.

## What's next:

- 1/24: SSMP Round Table discussion.
- Develop Operations and Maintenance as well as System Evaluation and Capacity Assurance Plan sections w/ HVLCSD staff.
- 2/15: Completed draft for Board, Staff, and Public comment.
- Submittal to Board for a vote.

# Inflow and Infiltration(I/I) Results Document Outline

- I. Introduction
- II. Why I/I Assessment?
  - A. History
  - B. Notice of Violation for Sewage Spill
- III. What is I/I?
- IV. Something with Manholes (Name TBD)
  - A. Data will be represented in the Appendices
- V. Flow Monitoring
  - A. Flow Monitoring Data: Lift Station 2
  - B. Flow Monitoring Data: Lift Station 3
  - C. Flow Monitoring Data: Lift Station 5
  - D. Flow Monitoring Data: Lift Station 6
  - E. Flow Monitoring Data: Parshall Flume
- VI. Nighttime Reconnaissance
  - A. November 14 2017
  - B. January 11 2018
  - C. TBD
- VII. Manhole Mapping
- VIII. Analysis of Data
  - A. Measures to identify and quantify the I/I sources using information pertaining to the overflows from collection system (Response to section 2.1 in I/I Work Plan Assessment)
  - B. A description of how identified repairs and any sewer line replacements will be implemented and timing for the work
  - C. An evaluation of cost effective measures to reduce the I/I (Response to section 2.2 in I/I Work Plan Assessment)
- IX. Conclusions
- X. Proposed schedule for completing necessary repairs (Response to section 2.7 in I/I Work Plan Assessment)

# I/I Monthly Reports to CRWQCB



## Hidden Valley Lake Community Services District

19400 Hartmann Road  
Hidden Valley Lake, CA 95467  
707.987.9201  
707.987.3237 fax  
www.hvlicsd.org

December 12, 2017

Mr. Guy Childs  
California Regional Water Quality Control Board  
Central Valley Region  
11020 Sun Center Drive, #200  
Rancho Cordova, CA 95670-6114

Re: Hidden Valley Lake Community Services District (HVLCSO), Inflow and Infiltration (I/I) November Progress Report

Dear Mr. Childs,

Per your request, please allow the following document to serve as a progress report for the course of November 2017.

These activities represent progress in HVLCSO's Infiltration and Inflow Assessment Work Plan (I/I Work Plan). The goal of the I/I Work Plan is to document specific tasks the District will complete to better identify known or suspected I/I issues within the wastewater collection system. The 7 tasks listed below represent the progress made by the District in the month of November 2017.

1. Identified close to 200 cleanouts located in low-lying areas and noted these areas as high priority areas for cleanout surveying.
2. Surveyed 50 cleanouts in the high priority areas as of November 30th, 2017.
3. Installing 4 temporary flow monitors near 4 different Lift Stations that will be collecting flow data until March 2018.
4. Installed a permanent flow monitor, the Parshall flume located upstream of Lift Station #1, and uploaded data to the in-house HMI and database.
5. Mapped every manhole in the community.
6. Started organizing flow direction data of the sewer system, and mapping this information.
7. Nighttime Reconnaissance performed on 3 problem areas; Video was recorded, uploaded, and catalogued.

Please do not hesitate to reach out to us on any inquiries you might have based around progress made thus far.

← November Progress Report

December Progress Report →



## Hidden Valley Lake Community Services District

19400 Hartmann Road  
Hidden Valley Lake, CA 95467  
707.987.9201  
707.987.3237 fax  
www.hvlicsd.org

January 8, 2018

Mr. Guy Childs  
California Regional Water Quality Control Board  
Central Valley Region  
11020 Sun Center Drive, #200  
Rancho Cordova, CA 95670-6114

Re: Hidden Valley Lake Community Services District (HVLCSO), Inflow and Infiltration (I/I) December Progress Report.

Dear Mr. Childs,

Per your request, please allow the following document to serve as a progress report for the course of December 2017.

These activities represent progress in HVLCSO's Infiltration and Inflow Assessment Work Plan (I/I Work Plan). The goal of the I/I Work Plan is to document specific tasks the District will complete to better identify known or suspected I/I issues within the wastewater collection system. The 4 tasks listed below represent the progress made by the District in the month of December 2017.

1. Completed cleanout surveying for previously identified cleanouts in high priority areas.
2. Completed map representing surveyed cleanouts in priority areas.
3. Installed 4 temporary flow monitors near 4 different Lift Stations and collected data for the first week of flow monitoring data (last week of December)
4. Completed basin map showing every manhole in each of the 4 high priority areas.
5. Developing an updated SSMP. First draft copy to be reviewed by key personnel.

Please do not hesitate to reach out to us on any inquiries you might have based around progress made thus far.

# Next Steps...

- 1/29/18-1/31/18 Attend ESRI GIS Water Conference.
- Continue with Nighttime Reconnaissance during the wet weather season.
- Continue filling out “cherry-picking” I/I Assessment Final Results document.
- Finalize SSMP document
- Rank each manhole from high-low priority in designated problem areas.
- Properly organize and accumulate GIS data of the wastewater infrastructure.



(Don't worry, we got this!)



**HIDDEN VALLEY LAKE COMMUNITY SERVICES DISTRICT  
BOARD OF DIRECTORS MEETING MINUTES  
MEETING DATE: December 19, 2017**

The Hidden Valley Lake Community Services District Board of Directors met this evening at the District office located at 19400 Hartmann Road, in Hidden Valley Lake, California.

Present were:

Director Jim Lieberman, President  
Director Carolyn Graham, Vice President  
Director Judy Mirbegan  
Director Jim Freeman  
Kirk Cloyd, General Manager  
Penny Cuadras, Administrative Assistant

Absent: Director Linda Herndon

**CALL TO ORDER**

The meeting was called to order at 7:01 p.m. by President Lieberman.

**APPROVAL OF AGENDA**

On a motion made by Director Mirbegan and second by Director Graham the Board unanimously approved the amended agenda.

**PRESENTATIONS**

(A) Lake County Milers Event Director, Jeanine Burnett presented a request to the Board of Directors for sponsorship of the 2018 Spring has Sprung Run.

(B) Approval of 2016-2017 Audit Report

Norm Newell from Smith & Newell summarized the audit findings for fiscal year 2014-2015. Mr. Newell also discussed with the Board the Finding and Recommendations section, and possible improvement opportunities.

On a motion made by Director Mirbegan and second by Director Graham the Board unanimously approved the Audit Report for fiscal year 2016-2017.

**CONSENT CALENDAR**

On a motion made by Director Graham and second by Director Freeman the Board unanimously approved the following Consent Calendar items:

(A) MINUTES: Approval of the Finance Committee Meeting minutes for November 20, 2017.

(B) MINUTES: Approval of the Regular Board Meeting minutes for November 21, 2017.

(C) MINUTES: Approval of the Personnel Committee Meeting minutes for December 5, 2017.



(D) MINUTES: Approval of the Finance Committee Meeting minutes for December 11, 2017.

(E) DISBURSEMENTS: Check # 34996 - # 35056 including drafts and payroll for a total of \$220,307.79.

### **BOARD COMMITTEE REPORTS**

Personnel Committee: Committee met to review of the proposed Employee Handbook.

Finance Committee: Committee reviewed the 2016-17 Audit Report and discussed proposed extension of the RGS Contract.

Emergency Preparedness Program Committee: No meeting held in December.

Lake Water Use Agreement-Ad Hoc Committee: No meeting held in December.

Valley Oaks Project Sub-Committee: No meeting held in December.

### **BOARD MEMBER ATTENDANCE AT OTHER MEETINGS**

No other meetings attended by members of the Board.

### **STAFF REPORTS**

Financial Report: Recycled water revenue at 100% of budget.

Administration/Customer Services Report: No discussion.

Field Operation Report: No Discussion.

ACWA State Legislative Committee: No ACWA meeting in December,

General Manager's Report: The General Manager discussed items in his report, and responded to all inquiries.

### **DISCUSSION AND POSSIBLE ACTION:**

#### **Discuss and approve the General Manager to extend the existing RGS Contract**

On motion by Director Mirbegian and second by Director Graham the Board approved the General Manager to extend the existing RGS Contract not to exceed \$2,6348.00.

Roll call vote:

AYES (4): Directors Lieberman, Graham, Mirbegian and Freeman

NAYS (0):

ABSTAIN (0):

ABSENT (1): Director Herndon

### **DISCUSSION:**

#### **Discuss financial numbers provided by Schneider Electric for the AMI project if utility rates are not increased during the life of the project.**

Director Mirbegian discussed her insight on the financial numbers provided by Schneider Electric for the AMI project.

### **PUBLIC COMMENT**

Several members of the public were present and voiced their concerns regarding the proposed Verizon Cell Tower Agreement.

Staff and employees were acknowledged by members of the public.



VENDOR SET: 01 Hidden Valley Lake

D I S B U R S E M E N T R E P O R T

BANK: ALL

VENDOR CLASS(ES): ALL CLASSES

REPORTING FUND NO#: 120 SEWER ENTERPRISE FUN

SORTED BY FUND

| VENDOR  | NAME                      | NO#<br>INVOICES | TOTAL<br>AMOUNT | 1099 | G/L<br>ACCT NO# | G/L<br>NAME           | G/L<br>AMOUNT |
|---------|---------------------------|-----------------|-----------------|------|-----------------|-----------------------|---------------|
| 01-1    | MISCELLANEOUS VENDOR      |                 |                 | N    |                 | FUND TOTAL FOR VENDOR | 3.88          |
| 01-1023 | HACH COMPANY              |                 |                 | N    |                 | FUND TOTAL FOR VENDOR | 253.97        |
| 01-1086 | CALIFORNIA SPECIAL DISTRI |                 |                 | N    |                 | FUND TOTAL FOR VENDOR | 3,179.00      |
| 01-11   | STATE OF CALIFORNIA EDD   |                 |                 | N    |                 | FUND TOTAL FOR VENDOR | 1,181.45      |
| 01-111  | JAMES DAY CONSTRUCTION, I |                 |                 | N    |                 | FUND TOTAL FOR VENDOR | 8,355.00      |
| 01-1392 | MEDIACOM                  |                 |                 | N    |                 | FUND TOTAL FOR VENDOR | 213.46        |
| 01-1579 | SOUTH LAKE REFUSE COMPANY |                 |                 | N    |                 | FUND TOTAL FOR VENDOR | 186.19        |
| 01-17   | SMITH & NEWELL CPA        |                 |                 | N    |                 | FUND TOTAL FOR VENDOR | 5,800.00      |
| 01-1705 | SPECIAL DISTRICT RISK MAN |                 |                 | N    |                 | FUND TOTAL FOR VENDOR | 13,955.21     |
| 01-1722 | US DEPARTMENT OF THE TREA |                 |                 | N    |                 | FUND TOTAL FOR VENDOR | 4,141.91      |
| 01-1751 | USA BLUE BOOK             |                 |                 | N    |                 | FUND TOTAL FOR VENDOR | 273.98        |
| 01-1926 | KELLER CANYON LANDFILL    |                 |                 | N    |                 | FUND TOTAL FOR VENDOR | 5,529.93      |
| 01-1961 | ACWA/JPIA                 |                 |                 | N    |                 | FUND TOTAL FOR VENDOR | 442.96        |
| 01-2057 | BARTLEY PUMP, INC.        |                 |                 | N    |                 | FUND TOTAL FOR VENDOR | 5,200.72      |
| 01-21   | CALIFORNIA PUBLIC EMPLOYE |                 |                 | N    |                 | FUND TOTAL FOR VENDOR | 4,545.97      |
| 01-2111 | DATAPROSE                 |                 |                 | N    |                 | FUND TOTAL FOR VENDOR | 230.75        |
| 01-2532 | WIPF CONSTRUCTION         |                 |                 | N    |                 | FUND TOTAL FOR VENDOR | 6,047.15      |
| 01-2538 | HARDESTER'S MARKETS & HAR |                 |                 | N    |                 | FUND TOTAL FOR VENDOR | 134.09        |
| 01-2539 | COUNTY OF LAKE HEALTH SER |                 |                 | N    |                 | FUND TOTAL FOR VENDOR | 1,722.00      |
| 01-2541 | MENDO MILL CLEARLAKE      |                 |                 | N    |                 | FUND TOTAL FOR VENDOR | 66.34         |
| 01-2585 | TYLER TECHNOLOGY          |                 |                 | N    |                 | FUND TOTAL FOR VENDOR | 121.00        |
| 01-2598 | VERIZON WIRELESS          |                 |                 | N    |                 | FUND TOTAL FOR VENDOR | 673.25        |
| 01-2636 | ACTION SANITARY, INC.     |                 |                 | N    |                 | FUND TOTAL FOR VENDOR | 61.67         |
| 01-2638 | RICOH USA, INC.           |                 |                 | N    |                 | FUND TOTAL FOR VENDOR | 392.38        |
| 01-2684 | OFFICE DEPOT              |                 |                 | N    |                 | FUND TOTAL FOR VENDOR | 393.98        |
| 01-2699 | MICHELLE HAMILTON         |                 |                 | N    |                 | FUND TOTAL FOR VENDOR | 625.00        |
| 01-2700 | REDFORD SERVICES          |                 |                 | N    |                 | FUND TOTAL FOR VENDOR | 1,900.00      |

VENDOR SET: 01 Hidden Valley Lake

D I S B U R S E M E N T R E P O R T

BANK: ALL

VENDOR CLASS(ES): ALL CLASSES

REPORTING FUND NO#: 120 SEWER ENTERPRISE FUN

SORTED BY FUND

| VENDOR  | NAME                      | NO#<br>INVOICES | TOTAL<br>AMOUNT | 1099 | G/L<br>ACCT NO# | G/L<br>NAME           | G/L<br>AMOUNT |
|---------|---------------------------|-----------------|-----------------|------|-----------------|-----------------------|---------------|
| 01-2736 | SIERRA CHEMICAL CO.       |                 |                 | N    |                 | FUND TOTAL FOR VENDOR | 1,965.41      |
| 01-2768 | LAKE COUNTY VECTOR CONTRO |                 |                 | N    |                 | FUND TOTAL FOR VENDOR | 15.36         |
| 01-2788 | GHD                       |                 |                 | N    |                 | FUND TOTAL FOR VENDOR | 3,469.50      |
| 01-2816 | CARDMEMBER SERVICE        |                 |                 | N    |                 | FUND TOTAL FOR VENDOR | 950.52        |
| 01-2820 | ALPHA ANALYTICAL LABORATO |                 |                 | N    |                 | FUND TOTAL FOR VENDOR | 3,203.00      |
| 01-2823 | GARDENS BY JILLIAN        |                 |                 | N    |                 | FUND TOTAL FOR VENDOR | 100.00        |
| 01-2824 | CALIFORNIA PUBLIC EMPLOYE |                 |                 | N    |                 | FUND TOTAL FOR VENDOR | 4,152.46      |
| 01-2825 | NATIONWIDE RETIREMENT SOL |                 |                 | N    |                 | FUND TOTAL FOR VENDOR | 886.25        |
| 01-2834 | STATE BOARD OF EQUALIZATI |                 |                 | N    |                 | FUND TOTAL FOR VENDOR | 388.59        |
| 01-2842 | COASTLAND CIVIL ENGINEERI |                 |                 | N    |                 | FUND TOTAL FOR VENDOR | 1,402.50      |
| 01-2860 | WESTGATE PETROLEUM CO., I |                 |                 | N    |                 | FUND TOTAL FOR VENDOR | 776.16        |
| 01-2876 | BOLD POLISNER MADDOW NELS |                 |                 | N    |                 | FUND TOTAL FOR VENDOR | 708.75        |
| 01-2880 | BENNETT SOLUTIONS         |                 |                 | N    |                 | FUND TOTAL FOR VENDOR | 30.03         |
| 01-2909 | STREAMLINE                |                 |                 | N    |                 | FUND TOTAL FOR VENDOR | 100.00        |
| 01-2914 | RAY MORGAN COMPANY        |                 |                 | N    |                 | FUND TOTAL FOR VENDOR | 96.77         |
| 01-2915 | CAL FIRE - KONOCTI CAMP   |                 |                 | N    |                 | FUND TOTAL FOR VENDOR | 1,142.00      |
| 01-2917 | AT&T MOBILITY             |                 |                 | N    |                 | FUND TOTAL FOR VENDOR | 64.64         |
| 01-2919 | REGIONAL GOVERNMENT SERVI |                 |                 | N    |                 | FUND TOTAL FOR VENDOR | 2,504.43      |
| 01-2923 | COUNTY OF LAKE - LAKE COU |                 |                 | N    |                 | FUND TOTAL FOR VENDOR | 302,390.00    |
| 01-2924 | LAKE COUNTY WASTE SOLUTIO |                 |                 | N    |                 | FUND TOTAL FOR VENDOR | 114.30        |
| 01-8    | AT&T                      |                 |                 | N    |                 | FUND TOTAL FOR VENDOR | 7.96          |
| 01-82   | E & M ELECTRIC & MACHINER |                 |                 | N    |                 | FUND TOTAL FOR VENDOR | 2,311.93      |
| 01-9    | PACIFIC GAS & ELECTRIC CO |                 |                 | N    |                 | FUND TOTAL FOR VENDOR | 4,655.70      |
| 01-981  | U S POSTMASTER            |                 |                 | N    |                 | FUND TOTAL FOR VENDOR | 98.00         |

\*\*\* FUND TOTALS \*\*\*

397,165.50

VENDOR SET: 01 Hidden Valley Lake

D I S B U R S E M E N T R E P O R T

BANK: ALL

VENDOR CLASS(ES): ALL CLASSES

REPORTING FUND NO#: 130 WATER ENTERPRISE FUN

SORTED BY FUND

| VENDOR  | NAME                      | NO#<br>INVOICES | TOTAL<br>AMOUNT | 1099 | G/L<br>ACCT NO# | G/L<br>NAME           | G/L<br>AMOUNT |
|---------|---------------------------|-----------------|-----------------|------|-----------------|-----------------------|---------------|
| 01-1    | MISCELLANEOUS VENDOR      |                 |                 | N    |                 | FUND TOTAL FOR VENDOR | 1,838.99      |
| 01-1086 | CALIFORNIA SPECIAL DISTRI |                 |                 | N    |                 | FUND TOTAL FOR VENDOR | 3,179.00      |
| 01-11   | STATE OF CALIFORNIA EDD   |                 |                 | N    |                 | FUND TOTAL FOR VENDOR | 1,364.23      |
| 01-1392 | MEDIACOM                  |                 |                 | N    |                 | FUND TOTAL FOR VENDOR | 213.46        |
| 01-1579 | SOUTH LAKE REFUSE COMPANY |                 |                 | N    |                 | FUND TOTAL FOR VENDOR | 186.17        |
| 01-1659 | WAGNER & BONSIGNORE       |                 |                 | N    |                 | FUND TOTAL FOR VENDOR | 160.00        |
| 01-17   | SMITH & NEWELL CPA        |                 |                 | N    |                 | FUND TOTAL FOR VENDOR | 5,800.00      |
| 01-1705 | SPECIAL DISTRICT RISK MAN |                 |                 | N    |                 | FUND TOTAL FOR VENDOR | 13,955.19     |
| 01-1722 | US DEPARTMENT OF THE TREA |                 |                 | N    |                 | FUND TOTAL FOR VENDOR | 4,731.07      |
| 01-1751 | USA BLUE BOOK             |                 |                 | N    |                 | FUND TOTAL FOR VENDOR | 273.95        |
| 01-1961 | ACWA/JPIA                 |                 |                 | N    |                 | FUND TOTAL FOR VENDOR | 442.95        |
| 01-21   | CALIFORNIA PUBLIC EMPLOYE |                 |                 | N    |                 | FUND TOTAL FOR VENDOR | 5,121.56      |
| 01-2111 | DATAPROSE                 |                 |                 | N    |                 | FUND TOTAL FOR VENDOR | 230.74        |
| 01-2538 | HARDESTER'S MARKETS & HAR |                 |                 | N    |                 | FUND TOTAL FOR VENDOR | 54.49         |
| 01-2539 | COUNTY OF LAKE HEALTH SER |                 |                 | N    |                 | FUND TOTAL FOR VENDOR | 1,057.00      |
| 01-2541 | MENDO MILL CLEARLAKE      |                 |                 | N    |                 | FUND TOTAL FOR VENDOR | 66.34         |
| 01-2582 | SWRCB ACCOUNTING OFFICE   |                 |                 | N    |                 | FUND TOTAL FOR VENDOR | 13,283.00     |
| 01-2585 | TYLER TECHNOLOGY          |                 |                 | N    |                 | FUND TOTAL FOR VENDOR | 121.00        |
| 01-2598 | VERIZON WIRELESS          |                 |                 | N    |                 | FUND TOTAL FOR VENDOR | 673.24        |
| 01-2636 | ACTION SANITARY, INC.     |                 |                 | N    |                 | FUND TOTAL FOR VENDOR | 61.67         |
| 01-2638 | RICOH USA, INC.           |                 |                 | N    |                 | FUND TOTAL FOR VENDOR | 392.36        |
| 01-2684 | OFFICE DEPOT              |                 |                 | N    |                 | FUND TOTAL FOR VENDOR | 395.90        |
| 01-2699 | MICHELLE HAMILTON         |                 |                 | N    |                 | FUND TOTAL FOR VENDOR | 625.00        |
| 01-2702 | PACE SUPPLY CORP          |                 |                 | N    |                 | FUND TOTAL FOR VENDOR | 1,257.76      |
| 01-2768 | LAKE COUNTY VECTOR CONTRO |                 |                 | N    |                 | FUND TOTAL FOR VENDOR | 15.36         |
| 01-2816 | CARDMEMBER SERVICE        |                 |                 | N    |                 | FUND TOTAL FOR VENDOR | 855.56        |
| 01-2820 | ALPHA ANALYTICAL LABORATO |                 |                 | N    |                 | FUND TOTAL FOR VENDOR | 1,105.00      |

VENDOR SET: 01 Hidden Valley Lake

D I S B U R S E M E N T R E P O R T

BANK: ALL

VENDOR CLASS(ES): ALL CLASSES

REPORTING FUND NO#: 130 WATER ENTERPRISE FUN

SORTED BY FUND

| VENDOR  | NAME                      | NO#<br>INVOICES | TOTAL<br>AMOUNT | 1099 | G/L<br>ACCT NO# | G/L<br>NAME           | G/L<br>AMOUNT |
|---------|---------------------------|-----------------|-----------------|------|-----------------|-----------------------|---------------|
| 01-2823 | GARDENS BY JILLIAN        |                 |                 | N    |                 | FUND TOTAL FOR VENDOR | 100.00        |
| 01-2824 | CALIFORNIA PUBLIC EMPLOYE |                 |                 | N    |                 | FUND TOTAL FOR VENDOR | 4,152.45      |
| 01-2825 | NATIONWIDE RETIREMENT SOL |                 |                 | N    |                 | FUND TOTAL FOR VENDOR | 1,078.75      |
| 01-2834 | STATE BOARD OF EQUALIZATI |                 |                 | N    |                 | FUND TOTAL FOR VENDOR | 388.56        |
| 01-2860 | WESTGATE PETROLEUM CO., I |                 |                 | N    |                 | FUND TOTAL FOR VENDOR | 776.15        |
| 01-2876 | BOLD POLISNER MADDOW NELS |                 |                 | N    |                 | FUND TOTAL FOR VENDOR | 708.75        |
| 01-2878 | BADGER METER              |                 |                 | N    |                 | FUND TOTAL FOR VENDOR | 81.00         |
| 01-2880 | BENNETT SOLUTIONS         |                 |                 | N    |                 | FUND TOTAL FOR VENDOR | 30.03         |
| 01-2909 | STREAMLINE                |                 |                 | N    |                 | FUND TOTAL FOR VENDOR | 100.00        |
| 01-2914 | RAY MORGAN COMPANY        |                 |                 | N    |                 | FUND TOTAL FOR VENDOR | 96.77         |
| 01-2917 | AT&T MOBILITY             |                 |                 | N    |                 | FUND TOTAL FOR VENDOR | 64.64         |
| 01-2919 | REGIONAL GOVERNMENT SERVI |                 |                 | N    |                 | FUND TOTAL FOR VENDOR | 2,504.42      |
| 01-2924 | LAKE COUNTY WASTE SOLUTIO |                 |                 | N    |                 | FUND TOTAL FOR VENDOR | 114.30        |
| 01-2925 | LIQUIVISION TECHNOLOGY IN |                 |                 | N    |                 | FUND TOTAL FOR VENDOR | 8,675.00      |
| 01-8    | AT&T                      |                 |                 | N    |                 | FUND TOTAL FOR VENDOR | 7.96          |
| 01-9    | PACIFIC GAS & ELECTRIC CO |                 |                 | N    |                 | FUND TOTAL FOR VENDOR | 15,550.98     |
| 01-981  | U S POSTMASTER            |                 |                 | N    |                 | FUND TOTAL FOR VENDOR | 98.00         |

\*\*\* FUND TOTALS \*\*\*

91,988.75

VENDOR SET: 01 Hidden Valley Lake

D I S B U R S E M E N T R E P O R T

BANK: ALL

VENDOR CLASS(ES): ALL CLASSES

REPORTING FUND NO#: 140 FLOOD ENTERPRISE FUN

SORTED BY FUND

| VENDOR              | NAME                      | NO#<br>INVOICES | TOTAL<br>AMOUNT | 1099<br>ACCT NO# | G/L<br>NAME           | G/L<br>AMOUNT |
|---------------------|---------------------------|-----------------|-----------------|------------------|-----------------------|---------------|
| 01-9                | PACIFIC GAS & ELECTRIC CO |                 |                 | N                | FUND TOTAL FOR VENDOR | 232.03        |
| *** FUND TOTALS *** |                           |                 |                 |                  |                       | 232.03        |

VENDOR SET: 01 Hidden Valley Lake

D I S B U R S E M E N T R E P O R T

BANK: ALL

VENDOR CLASS(ES): ALL CLASSES

REPORTING FUND NO#: 711 BOND ADMINISTRATION

SORTED BY FUND

| VENDOR                | NAME                      | NO#<br>INVOICES | TOTAL<br>AMOUNT | 1099<br>ACCT NO# | G/L<br>NAME           | G/L<br>AMOUNT |
|-----------------------|---------------------------|-----------------|-----------------|------------------|-----------------------|---------------|
| 01-19                 | NBS GOVERNMENT FINANCE GR |                 |                 | N                | FUND TOTAL FOR VENDOR | 1,803.06      |
| *** FUND TOTALS ***   |                           |                 |                 |                  |                       | 1,803.06      |
| *** REPORT TOTALS *** |                           |                 | 491,189.34      |                  |                       | 491,189.34    |

\*G / L EXPENSE DISTRIBUTION\*

| ACCOUNT NUMBER | ACCOUNT NAME                | AMOUNT    |
|----------------|-----------------------------|-----------|
| 120 2088       | SURVIVOR BENEFITS - PERS    | 10.62     |
| 120 2090       | PERS PAYABLE                | 2,080.41  |
| 120 2091       | FIT PAYABLE                 | 3,245.80  |
| 120 2092       | CIT PAYABLE                 | 954.94    |
| 120 2093       | SOCIAL SECURITY PAYABLE     | 8.99      |
| 120 2094       | MEDICARE PAYABLE            | 439.02    |
| 120 2095       | S D I PAYABLE               | 220.85    |
| 120 2099       | DEFERRED COMP - 457 PLAN    | 886.25    |
| 120 5-00-5025  | RETIREE HEALTH BENEFITS     | 1,745.73  |
| 120 5-00-5060  | GASOLINE, OIL & FUEL        | 853.86    |
| 120 5-00-5062  | TAXES & LIC                 | 403.95    |
| 120 5-00-5080  | MEMBERSHIP & SUBSCRIPTIONS  | 3,454.00  |
| 120 5-00-5092  | POSTAGE & SHIPPING          | 278.80    |
| 120 5-00-5121  | LEGAL SERVICES              | 708.75    |
| 120 5-00-5122  | ENGINEERING SERVICES        | 3,469.50  |
| 120 5-00-5123  | OTHER PROFESSIONAL SERVICES | 2,504.43  |
| 120 5-00-5126  | AUDIT SERVICES              | 5,800.00  |
| 120 5-00-5130  | PRINTING & PUBLICATION      | 49.95     |
| 120 5-00-5145  | EQUIPMENT RENTAL            | 489.15    |
| 120 5-00-5148  | OPERATING SUPPLIES          | 2,230.39  |
| 120 5-00-5150  | REPAIR & REPLACE            | 16,709.66 |
| 120 5-00-5155  | MAINT BLDG & GROUNDS        | 1,417.97  |
| 120 5-00-5156  | CUSTODIAL SERVICES          | 2,525.00  |
| 120 5-00-5160  | SLUDGE DISPOSAL             | 11,577.08 |
| 120 5-00-5191  | TELEPHONE                   | 959.31    |
| 120 5-00-5192  | ELECTRICITY                 | 4,655.70  |
| 120 5-00-5193  | OTHER UTILITIES             | 186.19    |
| 120 5-00-5194  | IT SERVICES                 | 151.00    |
| 120 5-00-5195  | ENV/MONITORING              | 3,203.00  |



VENDOR SET: 01 Hidden Valley Lake

D I S B U R S E M E N T R E P O R T

BANK: ALL

VENDOR CLASS(ES): ALL CLASSES

REPORTING FUND NO#: 711 BOND ADMINISTRATION

SORTED BY FUND

\*G/L EXPENSE DISTRIBUTION\*

| ACCOUNT NUMBER | ACCOUNT NAME                   | AMOUNT     |
|----------------|--------------------------------|------------|
| 120 5-00-5198  | ANNUAL OPERATING FEES          | 1,722.00   |
| 120 5-00-5315  | SAFETY EQUIPMENT               | 273.98     |
| 120 5-10-5010  | SALARIES & WAGES               | 258.75     |
| 120 5-10-5020  | EMPLOYEE BENEFITS              | 5,996.11   |
| 120 5-10-5021  | RETIREMENT BENEFITS            | 3,592.72   |
| 120 5-10-5090  | OFFICE SUPPLIES                | 337.34     |
| 120 5-10-5170  | TRAVEL MILEAGE                 | 19.11      |
| 120 5-10-5179  | ADM MISC EXPENSES              | 30.03      |
| 120 5-30-5010  | SALARIES & WAGES               | 178.25     |
| 120 5-30-5020  | EMPLOYEE BENEFITS              | 3,394.88   |
| 120 5-30-5021  | RETIREMENT BENEFITS            | 3,014.68   |
| 120 5-30-5090  | OFFICE SUPPLIES                | 56.64      |
| 120 5-40-5010  | DIRECTORS COMPENSATION         | 11.10      |
| 120 5-40-5020  | DIRECTOR BENEFITS              | 5.66       |
| 120 5-40-5030  | DIRECTOR HEALTH BENEFITS       | 3,261.45   |
| 120 5-60-6003  | PW LKHVA81                     | 302,390.00 |
| 120 5-60-6006  | PW LKHVF83                     | 1,402.50   |
|                | ** FUND TOTAL **               | 397,165.50 |
|                |                                |            |
| 130 1052       | ACCTS REC WATER USE            | 1,835.12   |
| 130 2088       | SURVIVOR BENEFITS - PERS       | 11.70      |
| 130 2090       | PERS PAYABLE                   | 2,334.28   |
| 130 2091       | FIT PAYABLE                    | 3,741.40   |
| 130 2092       | CIT PAYABLE                    | 1,108.65   |
| 130 2093       | SOCIAL SECURITY PAYABLE        | 9.61       |
| 130 2094       | MEDICARE PAYABLE               | 485.27     |
| 130 2095       | S D I PAYABLE                  | 249.54     |
| 130 2099       | DEFERRED COMP - PLAN 457 PAYAB | 1,078.75   |
| 130 5-00-5025  | RETIREE HEALTH BENEFITS        | 1,745.73   |
| 130 5-00-5060  | GASOLINE, OIL & FUEL           | 798.28     |
| 130 5-00-5062  | TAXES & LIC                    | 403.92     |
| 130 5-00-5080  | MEMBERSHIP & SUBSCRIPTIONS     | 3,459.00   |
| 130 5-00-5092  | POSTAGE & SHIPPING             | 278.80     |
| 130 5-00-5121  | LEGAL SERVICES                 | 708.75     |
| 130 5-00-5123  | OTHER PROFESSIONAL SERVICES    | 2,504.42   |
| 130 5-00-5124  | WATER RIGHTS                   | 160.00     |
| 130 5-00-5126  | AUDIT SERVICES                 | 5,800.00   |
| 130 5-00-5130  | PRINTING & PUBLICATION         | 49.94      |
| 130 5-00-5145  | EQUIPMENT RENTAL               | 489.13     |
| 130 5-00-5150  | REPAIR & REPLACE               | 10,559.91  |
| 130 5-00-5155  | MAINT BLDG & GROUNDS           | 275.97     |
| 130 5-00-5156  | CUSTODIAL SERVICES             | 625.00     |
| 130 5-00-5191  | TELEPHONE                      | 959.30     |
| 130 5-00-5192  | ELECTRICITY                    | 15,550.98  |
| 130 5-00-5193  | OTHER UTILITIES                | 186.17     |
| 130 5-00-5194  | IT SERVICES                    | 232.00     |
| 130 5-00-5195  | ENV/MONITORING                 | 1,105.00   |

VENDOR SET: 01 Hidden Valley Lake

## D I S B U R S E M E N T R E P O R T

BANK: ALL

VENDOR CLASS(ES): ALL CLASSES

REPORTING FUND NO#: 711 BOND ADMINISTRATION

SORTED BY FUND

## \*G/L EXPENSE DISTRIBUTION\*

| ACCOUNT NUMBER | ACCOUNT NAME             | AMOUNT     |
|----------------|--------------------------|------------|
| 130 5-00-5198  | ANNUAL OPERATING FEES    | 14,340.00  |
| 130 5-00-5315  | SAFETY EQUIPMENT         | 273.95     |
| 130 5-10-5010  | SALARIES & WAGES         | 258.72     |
| 130 5-10-5020  | EMPLOYEE BENEFITS        | 5,996.10   |
| 130 5-10-5021  | RETIREMENT BENEFITS      | 3,592.66   |
| 130 5-10-5090  | OFFICE SUPPLIES          | 339.27     |
| 130 5-10-5170  | TRAVEL MILEAGE           | 19.10      |
| 130 5-10-5175  | EDUCATION / SEMINARS     | 101.88     |
| 130 5-10-5179  | ADM MISC EXPENSES        | 30.03      |
| 130 5-30-5010  | SALARIES & WAGES         | 224.22     |
| 130 5-30-5020  | EMPLOYEE BENEFITS        | 3,394.86   |
| 130 5-30-5021  | RETIREMENT BENEFITS      | 3,335.37   |
| 130 5-30-5090  | OFFICE SUPPLIES          | 56.63      |
| 130 5-40-5010  | DIRECTORS COMPENSATION   | 11.85      |
| 130 5-40-5020  | DIRECTOR BENEFITS        | 6.04       |
| 130 5-40-5030  | DIRECTOR HEALTH BENEFITS | 3,261.45   |
|                | ** FUND TOTAL **         | 91,988.75  |
| 140 5-00-5192  | ELECTRICITY              | 232.03     |
|                | ** FUND TOTAL **         | 232.03     |
| 711 5-00-5123  | OTHER PROF SERVICES      | 1,803.06   |
|                | ** FUND TOTAL **         | 1,803.06   |
| -----          |                          |            |
|                | ** TOTAL **              | 491,189.34 |

NO ERRORS

SELECTION CRITERIA

---

VENDOR SET: 01 Hidden Valley Lake

VENDOR: ALL

BANK: ALL

VENDOR CLASS(ES): ALL CLASSES

---

TRANSACTION SELECTION

REPORTING: PAID ITEMS ,G/L DIST

|                  | =====PAYMENT DATES=====      | =====ITEM DATES=====      | =====POSTING DATES=====   |
|------------------|------------------------------|---------------------------|---------------------------|
| PAID ITEMS DATES | : 12/01/2017 THRU 12/31/2017 | 0/00/0000 THRU 99/99/9999 | 0/00/0000 THRU 99/99/9999 |

---

PRINT OPTIONS

REPORT SEQUENCE: FUND

G/L EXPENSE DISTRIBUTION: YES

CHECK RANGE: 000000 THRU 999999

---

HIDDEN VALLEY LAKE CSD  
REVENUE & EXPENSE REPORT (UNAUDITED)  
AS OF: DECEMBER 31ST, 2017

120-SEWER ENTERPRISE FUND  
FINANCIAL SUMMARY

|                                    | CURRENT<br>BUDGET | CURRENT<br>PERIOD | YEAR TO DATE<br>ACTUAL | BUDGET<br>BALANCE | % OF<br>BUDGET |
|------------------------------------|-------------------|-------------------|------------------------|-------------------|----------------|
| REVENUE SUMMARY                    |                   |                   |                        |                   |                |
| ALL REVENUE                        | 1,279,509.00      | 94,047.04         | 649,914.99             | 629,594.01        | 50.79          |
| TOTAL REVENUES                     | 1,279,509.00      | 94,047.04         | 649,914.99             | 629,594.01        | 50.79          |
|                                    | =====             | =====             | =====                  | =====             | =====          |
| EXPENDITURE SUMMARY                |                   |                   |                        |                   |                |
| NON-DEPARTMENTAL                   | 520,588.00        | 65,836.28         | 257,476.05             | 263,111.95        | 49.46          |
| ADMINISTRATION                     | 447,486.00        | 28,077.25         | 184,540.60             | 262,945.40        | 41.24          |
| OFFICE                             | 0.00              | 0.00              | 0.00                   | 0.00              | 0.00           |
| FIELD                              | 262,904.80        | 18,936.28         | 125,514.21             | 137,390.59        | 47.74          |
| DIRECTORS                          | 43,356.00         | 3,423.21          | 23,024.83              | 20,331.17         | 53.11          |
| TOTAL EXPENDITURES                 | 1,274,334.80      | 116,273.02        | 590,555.69             | 683,779.11        | 46.34          |
|                                    | =====             | =====             | =====                  | =====             | =====          |
| REVENUES OVER/(UNDER) EXPENDITURES | 5,174.20 (        | 22,225.98)        | 59,359.30 (            | 54,185.10)        | 1,147.22       |

120-SEWER ENTERPRISE FUND  
REVENUES

|   | CURRENT<br>BUDGET   | CURRENT<br>PERIOD | YEAR TO DATE<br>ACTUAL | BUDGET<br>BALANCE | % OF<br>BUDGET |
|---|---------------------|-------------------|------------------------|-------------------|----------------|
| 120-4020 INSPECTION FEES                | 500.00              | 0.00              | 600.00 (               | 100.00)           | 120.00         |
| 120-4036 DEVELOPER SEWER FEES           | 0.00                | 0.00              | 0.00                   | 0.00              | 0.00           |
| 120-4040 Lien Recording Fee             | 0.00                | 0.00              | 0.00                   | 0.00              | 0.00           |
| 120-4045 AVAILABILITY FEES              | 7,000.00            | 0.00              | 0.00                   | 7,000.00          | 0.00           |
| 120-4050 SALES OF RECLAIMED WATER       | 90,000.00           | 1,023.88          | 91,024.20 (            | 1,024.20)         | 101.14         |
| 120-4111 COMM SEWER USE                 | 26,868.00           | 2,459.80          | 16,934.02              | 9,933.98          | 63.03          |
| 120-4112 GOV'T SEWER USE                | 590.00              | 58.77             | 405.74                 | 184.26            | 68.77          |
| 120-4116 SEWER USE CHARGES              | 1,153,051.00        | 85,416.89         | 512,251.47             | 640,799.53        | 44.43          |
| 120-4210 LATE FEE                       | 0.00                | 0.00              | 50.20 (                | 50.20)            | 0.00           |
| 120-4300 MISC INCOME                    | 1,000.00            | 3.70              | 526.14                 | 473.86            | 52.61          |
| 120-4310 OTHER INCOME                   | 0.00                | 0.00              | 0.00                   | 0.00              | 0.00           |
| 120-4320 FEMA/CalOES Grants             | 0.00                | 5,084.00          | 5,084.00 (             | 5,084.00)         | 0.00           |
| 120-4505 LEASE INCOME                   | 0.00                | 0.00              | 0.00                   | 0.00              | 0.00           |
| 120-4550 INTEREST INCOME                | 500.00              | 0.00              | 200.02                 | 299.98            | 40.00          |
| 120-4580 TRANSFERS IN                   | 0.00                | 0.00              | 22,839.20 (            | 22,839.20)        | 0.00           |
| 120-4591 INCOME APPLICABLE TO PRIOR YRS | 0.00                | 0.00              | 0.00                   | 0.00              | 0.00           |
| 120-4955 Gain/Loss                      | 0.00                | 0.00              | 0.00                   | 0.00              | 0.00           |
| <b>TOTAL REVENUES</b>                   | <b>1,279,509.00</b> | <b>94,047.04</b>  | <b>649,914.99</b>      | <b>629,594.01</b> | <b>50.79</b>   |
|   | =====               | =====             | =====                  | =====             | =====          |

HIDDEN VALLEY LAKE CSD  
 REVENUE & EXPENSE REPORT (UNAUDITED)  
 AS OF: DECEMBER 31ST, 2017

120-SEWER ENTERPRISE FUND

NON-DEPARTMENTAL

EXPENDITURES

|  | CURRENT<br>BUDGET | CURRENT<br>PERIOD | YEAR TO DATE<br>ACTUAL | BUDGET<br>BALANCE | % OF<br>BUDGET |
|--|-------------------|-------------------|------------------------|-------------------|----------------|
| 120-5-00-5010 SALARY & WAGES             | 0.00              | 0.00              | 0.00                   | 0.00              | 0.00           |
| 120-5-00-5020 EMPLOYEE BENEFITS          | 0.00              | 0.00              | 0.00                   | 0.00              | 0.00           |
| 120-5-00-5021 RETIREMENT BENEFITS        | 0.00              | 0.00              | 16.86 (                | 16.86)            | 0.00           |
| 120-5-00-5024 WORKERS' COMP INSURANCE    | 9,500.00          | 0.00              | 11,103.95 (            | 1,603.95)         | 116.88         |
| 120-5-00-5025 RETIREE HEALTH BENEFITS    | 10,500.00         | 872.85            | 4,965.82               | 5,534.18          | 47.29          |
| 120-5-00-5026 COBRA Health & Dental      | 0.00              | 0.00 (            | 33.72)                 | 33.72             | 0.00           |
| 120-5-00-5040 ELECTION EXPENSE           | 0.00              | 0.00              | 0.00                   | 0.00              | 0.00           |
| 120-5-00-5050 DEPRECIATION               | 0.00              | 0.00              | 0.00                   | 0.00              | 0.00           |
| 120-5-00-5060 GASOLINE, OIL & FUEL       | 8,000.00          | 853.86            | 3,746.65               | 4,253.35          | 46.83          |
| 120-5-00-5061 VEHICLE MAINT              | 7,500.00          | 0.00              | 6,924.34               | 575.66            | 92.32          |
| 120-5-00-5062 TAXES & LIC                | 500.00            | 403.95            | 708.68 (               | 208.68)           | 141.74         |
| 120-5-00-5074 INSURANCE                  | 18,000.00         | 0.00              | 20,611.40 (            | 2,611.40)         | 114.51         |
| 120-5-00-5075 BANK FEES                  | 13,400.00         | 1,339.76          | 6,914.50               | 6,485.50          | 51.60          |
| 120-5-00-5080 MEMBERSHIP & SUBSCRIPTIONS | 5,000.00          | 3,454.00          | 4,936.81               | 63.19             | 98.74          |
| 120-5-00-5092 POSTAGE & SHIPPING         | 5,000.00          | 278.80            | 2,932.86               | 2,067.14          | 58.66          |
| 120-5-00-5110 CONTRACTUAL SERVICES       | 0.00              | 0.00              | 0.00                   | 0.00              | 0.00           |
| 120-5-00-5121 LEGAL SERVICES             | 10,000.00         | 708.75            | 2,508.75               | 7,491.25          | 25.09          |
| 120-5-00-5122 ENGINEERING SERVICES       | 27,000.00         | 3,469.50          | 6,117.23               | 20,882.77         | 22.66          |
| 120-5-00-5123 OTHER PROFESSIONAL SERVICE | 90,000.00         | 2,504.43          | 12,642.66              | 77,357.34         | 14.05          |
| 120-5-00-5126 AUDIT SERVICES             | 7,500.00          | 5,800.00          | 5,800.00               | 1,700.00          | 77.33          |
| 120-5-00-5130 PRINTING & PUBLICATION     | 5,000.00          | 49.95             | 1,608.72               | 3,391.28          | 32.17          |
| 120-5-00-5135 NEWSLETTER                 | 500.00            | 0.00              | 0.00                   | 500.00            | 0.00           |
| 120-5-00-5140 RENTS & LEASES             | 0.00              | 0.00              | 0.00                   | 0.00              | 0.00           |
| 120-5-00-5145 EQUIPMENT RENTAL           | 5,000.00          | 489.15            | 1,521.87               | 3,478.13          | 30.44          |
| 120-5-00-5148 OPERATING SUPPLIES         | 18,000.00         | 2,230.39          | 10,672.87              | 7,327.13          | 59.29          |
| 120-5-00-5150 REPAIR & REPLACE           | 100,000.00        | 16,709.66         | 44,057.54              | 55,942.46         | 44.06          |
| 120-5-00-5155 MAINT BLDG & GROUNDS       | 10,000.00         | 1,417.97          | 2,398.58               | 7,601.42          | 23.99          |
| 120-5-00-5156 CUSTODIAL SERVICES         | 15,150.00         | 2,525.00          | 7,575.00               | 7,575.00          | 50.00          |
| 120-5-00-5157 SECURITY                   | 5,000.00          | 0.00              | 264.00                 | 4,736.00          | 5.28           |
| 120-5-00-5160 SLUDGE DISPOSAL            | 26,000.00         | 11,577.08         | 27,664.58 (            | 1,664.58)         | 106.40         |
| 120-5-00-5180 UNCOLLECTABLE ACCOUNTS     | 0.00              | 0.00              | 0.00                   | 0.00              | 0.00           |
| 120-5-00-5191 TELEPHONE                  | 8,500.00          | 959.31            | 5,926.33               | 2,573.67          | 69.72          |
| 120-5-00-5192 ELECTRICITY                | 37,888.00         | 4,655.70          | 15,347.21              | 22,540.79         | 40.51          |
| 120-5-00-5193 OTHER UTILITIES            | 2,600.00          | 186.19            | 929.71                 | 1,670.29          | 35.76          |
| 120-5-00-5194 IT SERVICES                | 24,500.00         | 151.00            | 25,627.76 (            | 1,127.76)         | 104.60         |
| 120-5-00-5195 ENV/MONITORING             | 32,000.00         | 3,203.00          | 15,407.70              | 16,592.30         | 48.15          |
| 120-5-00-5196 RISK MANAGEMENT            | 0.00              | 0.00              | 0.00                   | 0.00              | 0.00           |
| 120-5-00-5198 ANNUAL OPERATING FEES      | 2,000.00          | 1,722.00          | 1,722.00               | 278.00            | 86.10          |
| 120-5-00-5310 EQUIPMENT - FIELD          | 1,500.00          | 0.00              | 47.73                  | 1,452.27          | 3.18           |
| 120-5-00-5311 EQUIPMENT - OFFICE         | 1,300.00          | 0.00              | 148.13                 | 1,151.87          | 11.39          |
| 120-5-00-5312 TOOLS - FIELD              | 1,000.00          | 0.00              | 0.00                   | 1,000.00          | 0.00           |
| 120-5-00-5315 SAFETY EQUIPMENT           | 2,500.00          | 273.98            | 2,602.03 (             | 102.03)           | 104.08         |
| 120-5-00-5510 SEWER OUTREACH             | 0.00              | 0.00              | 0.00                   | 0.00              | 0.00           |
| 120-5-00-5545 RECORDING FEES             | 250.00            | 0.00              | 57.50                  | 192.50            | 23.00          |
| 120-5-00-5580 TRANSFERS OUT              | 0.00              | 0.00              | 4,000.00 (             | 4,000.00)         | 0.00           |
| 120-5-00-5590 NON-OPERATING OTHER        | 0.00              | 0.00              | 0.00                   | 0.00              | 0.00           |
| 120-5-00-5591 EXPENSES APPLICABLE TO PRI | 0.00              | 0.00              | 0.00                   | 0.00              | 0.00           |
| 120-5-00-5600 CONTINGENCY                | 10,000.00         | 0.00              | 0.00                   | 10,000.00         | 0.00           |
| 120-5-00-5650 OPERATING RESERVES         | 0.00              | 0.00              | 0.00                   | 0.00              | 0.00           |

HIDDEN VALLEY LAKE CSD  
REVENUE & EXPENSE REPORT (UNAUDITED)  
AS OF: DECEMBER 31ST, 2017

120-SEWER ENTERPRISE FUND  
NON-DEPARTMENTAL  
EXPENDITURES

|                            | CURRENT<br>BUDGET | CURRENT<br>PERIOD | YEAR TO DATE<br>ACTUAL | BUDGET<br>BALANCE | % OF<br>BUDGET |
|----------------------------|-------------------|-------------------|------------------------|-------------------|----------------|
| 120-5-00-5700 OVER / SHORT | 0.00              | 0.00              | 0.00                   | 0.00              | 0.00           |
| TOTAL NON-DEPARTMENTAL     | 520,588.00        | 65,836.28         | 257,476.05             | 263,111.95        | 49.46          |

AS OF: DECEMBER 31ST, 2017

120-SEWER ENTERPRISE FUND

ADMINISTRATION

EXPENDITURES

|                                    | CURRENT<br>BUDGET | CURRENT<br>PERIOD | YEAR TO DATE<br>ACTUAL | BUDGET<br>BALANCE | % OF<br>BUDGET |
|------------------------------------|-------------------|-------------------|------------------------|-------------------|----------------|
| 120-5-10-5010 SALARIES & WAGES     | 311,436.00        | 17,940.40         | 118,041.16             | 193,394.84        | 37.90          |
| 120-5-10-5020 EMPLOYEE BENEFITS    | 74,000.00         | 6,157.65          | 40,480.47              | 33,519.53         | 54.70          |
| 120-5-10-5021 RETIREMENT BENEFITS  | 51,500.00         | 3,592.72          | 23,290.12              | 28,209.88         | 45.22          |
| 120-5-10-5063 CERTIFICATIONS       | 0.00              | 0.00              | 0.00                   | 0.00              | 0.00           |
| 120-5-10-5090 OFFICE SUPPLIES      | 4,000.00          | 337.34            | 1,927.86               | 2,072.14          | 48.20          |
| 120-5-10-5170 TRAVEL MILEAGE       | 1,200.00          | 19.11             | 187.25                 | 1,012.75          | 15.60          |
| 120-5-10-5175 EDUCATION / SEMINARS | 5,000.00          | 0.00              | 530.01                 | 4,469.99          | 10.60          |
| 120-5-10-5179 ADM MISC EXPENSES    | 350.00            | 30.03             | 83.73                  | 266.27            | 23.92          |
| <b>TOTAL ADMINISTRATION</b>        | <b>447,486.00</b> | <b>28,077.25</b>  | <b>184,540.60</b>      | <b>262,945.40</b> | <b>41.24</b>   |



HIDDEN VALLEY LAKE CSD  
REVENUE & EXPENSE REPORT (UNAUDITED)  
AS OF: DECEMBER 31ST, 2017

## 120-SEWER ENTERPRISE FUND

## OFFICE

## EXPENDITURES

|                                 | CURRENT<br>BUDGET | CURRENT<br>PERIOD | YEAR TO DATE<br>ACTUAL | BUDGET<br>BALANCE | % OF<br>BUDGET |
|---------------------------------|-------------------|-------------------|------------------------|-------------------|----------------|
| 120-5-20-5010 SALARIES & WAGES  | 0.00              | 0.00              | 0.00                   | 0.00              | 0.00           |
| 120-5-20-5020 EMPLOYEE BENEFITS | 0.00              | 0.00              | 0.00                   | 0.00              | 0.00           |
| <hr/>                           |                   |                   |                        |                   |                |
| TOTAL OFFICE                    | 0.00              | 0.00              | 0.00                   | 0.00              | 0.00           |

## 120-SEWER ENTERPRISE FUND

## FIELD

## EXPENDITURES

|                                    | CURRENT<br>BUDGET | CURRENT<br>PERIOD | YEAR TO DATE<br>ACTUAL | BUDGET<br>BALANCE | % OF<br>BUDGET |
|------------------------------------|-------------------|-------------------|------------------------|-------------------|----------------|
| 120-5-30-5010 SALARIES & WAGES     | 170,302.80        | 12,470.08         | 80,011.98              | 90,290.82         | 46.98          |
| 120-5-30-5020 EMPLOYEE BENEFITS    | 48,304.00         | 3,394.88          | 22,295.81              | 26,008.19         | 46.16          |
| 120-5-30-5021 RETIREMENT BENEFITS  | 35,498.00         | 3,014.68          | 19,013.44              | 16,484.56         | 53.56          |
| 120-5-30-5022 CLOTHING ALLOWANCE   | 1,800.00          | 0.00              | 1,227.86               | 572.14            | 68.21          |
| 120-5-30-5063 CERTIFICATIONS       | 1,500.00          | 0.00              | 435.00                 | 1,065.00          | 29.00          |
| 120-5-30-5090 OFFICE SUPPLIES      | 2,000.00          | 56.64             | 103.76                 | 1,896.24          | 5.19           |
| 120-5-30-5170 TRAVEL MILEAGE       | 500.00            | 0.00              | 501.36 (               | 1.36)             | 100.27         |
| 120-5-30-5175 EDUCATION / SEMINARS | 3,000.00          | 0.00              | 1,925.00               | 1,075.00          | 64.17          |
| <br>                               |                   |                   |                        |                   |                |
| TOTAL FIELD                        | 262,904.80        | 18,936.28         | 125,514.21             | 137,390.59        | 47.74          |

HIDDEN VALLEY LAKE CSD  
 REVENUE & EXPENSE REPORT (UNAUDITED)

AS OF: DECEMBER 31ST, 2017

120-SEWER ENTERPRISE FUND  
 DIRECTORS  
 EXPENDITURES

|  | CURRENT<br>BUDGET | CURRENT<br>PERIOD | YEAR TO DATE<br>ACTUAL | BUDGET<br>BALANCE | % OF<br>BUDGET |
|--|-------------------|-------------------|------------------------|-------------------|----------------|
| 120-5-40-5010 DIRECTORS COMPENSATION   | 3,000.00          | 156.10            | 936.60                 | 2,063.40          | 31.22          |
| 120-5-40-5020 DIRECTOR BENEFITS        | 100.00            | 5.66              | 34.15                  | 65.85             | 34.15          |
| 120-5-40-5030 DIRECTOR HEALTH BENEFITS | 38,556.00         | 3,261.45          | 21,621.45              | 16,934.55         | 56.08          |
| 120-5-40-5170 TRAVEL MILEAGE           | 200.00            | 0.00              | 132.63                 | 67.37             | 66.32          |
| 120-5-40-5175 EDUCATION / SEMINARS     | 0.00              | 0.00              | 0.00                   | 0.00              | 0.00           |
| 120-5-40-5176 DIRECTOR TRAINING        | 1,500.00          | 0.00              | 300.00                 | 1,200.00          | 20.00          |
| <br>                                   |                   |                   |                        |                   |                |
| TOTAL DIRECTORS                        | 43,356.00         | 3,423.21          | 23,024.83              | 20,331.17         | 53.11          |
| <br>                                   |                   |                   |                        |                   |                |
| TOTAL EXPENDITURES                     | 1,274,334.80      | 116,273.02        | 590,555.69             | 683,779.11        | 46.34          |
|  | =====             | =====             | =====                  | =====             | =====          |
| REVENUES OVER/(UNDER) EXPENDITURES     | 5,174.20 (        | 22,225.98)        | 59,359.30 (            | 54,185.10)        | 1,147.22       |
|  | =====             | =====             | =====                  | =====             | =====          |

\*\*\* END OF REPORT \*\*\*

AS OF: DECEMBER 31ST, 2017

130-WATER ENTERPRISE FUND  
FINANCIAL SUMMARY

|                                    | CURRENT<br>BUDGET | CURRENT<br>PERIOD | YEAR TO DATE<br>ACTUAL | BUDGET<br>BALANCE | % OF<br>BUDGET |
|------------------------------------|-------------------|-------------------|------------------------|-------------------|----------------|
| REVENUE SUMMARY                    |                   |                   |                        |                   |                |
| ALL REVENUE                        | 1,677,221.00      | 98,255.95         | 744,715.31             | 932,505.69        | 44.40          |
| TOTAL REVENUES                     | 1,677,221.00      | 98,255.95         | 744,715.31             | 932,505.69        | 44.40          |
| EXPENDITURE SUMMARY                |                   |                   |                        |                   |                |
| NON-DEPARTMENTAL                   | 762,170.00        | 60,973.14         | 313,054.03             | 449,115.97        | 41.07          |
| ADMINISTRATION                     | 298,266.40        | 28,180.98         | 183,540.41             | 114,725.99        | 61.54          |
| OFFICE                             | 0.00              | 0.00              | 0.00                   | 0.00              | 0.00           |
| FIELD                              | 304,030.80        | 22,475.28         | 146,781.89             | 157,248.91        | 48.28          |
| DIRECTORS                          | 43,656.00         | 3,434.34          | 23,091.21              | 20,564.79         | 52.89          |
| TOTAL EXPENDITURES                 | 1,408,123.20      | 115,063.74        | 666,467.54             | 741,655.66        | 47.33          |
| REVENUES OVER/(UNDER) EXPENDITURES | 269,097.80        | ( 16,807.79)      | 78,247.77              | 190,850.03        | 29.08          |

HIDDEN VALLEY LAKE CSD  
 REVENUE & EXPENSE REPORT (UNAUDITED)

AS OF: DECEMBER 31ST, 2017

130-WATER ENTERPRISE FUND

REVENUES

|   | CURRENT BUDGET | CURRENT PERIOD | YEAR TO DATE ACTUAL | BUDGET BALANCE | % OF BUDGET |
|---|----------------|----------------|---------------------|----------------|-------------|
| 130-4035 RECONNECT FEE                  | 13,000.00      | 630.00         | 6,255.00            | 6,745.00       | 48.12       |
| 130-4038 COMM WATER METER INSTALL       | 0.00           | 0.00           | 0.00                | 0.00           | 0.00        |
| 130-4039 WATER METER INST               | 1,000.00       | 0.00           | 340.00              | 660.00         | 34.00       |
| 130-4040 RECORDING FEE                  | 100.00         | 0.00           | 158.93 (            | 58.93)         | 158.93      |
| 130-4045 AVAILABILITY FEES              | 25,000.00      | 0.00           | 0.00                | 25,000.00      | 0.00        |
| 130-4110 COMM WATER USE                 | 84,081.00      | 4,698.07       | 55,031.09           | 29,049.91      | 65.45       |
| 130-4112 GOV'T WATER USE                | 6,101.00       | 375.09         | 2,855.99            | 3,245.01       | 46.81       |
| 130-4115 WATER USE                      | 1,516,739.00   | 89,863.92      | 661,950.18          | 854,788.82     | 43.64       |
| 130-4117 WATER OVERAGE FEE              | 0.00           | 0.00           | 0.00                | 0.00           | 0.00        |
| 130-4118 WATER OVERAGE COMM             | 0.00           | 0.00           | 0.00                | 0.00           | 0.00        |
| 130-4119 WATER OVERAGE GOV              | 0.00           | 0.00           | 0.00                | 0.00           | 0.00        |
| 130-4210 LATE FEE                       | 28,000.00      | 2,585.17       | 16,460.81           | 11,539.19      | 58.79       |
| 130-4215 RETURNED CHECK FEE             | 1,200.00       | 100.00         | 450.00              | 750.00         | 37.50       |
| 130-4300 MISC INCOME                    | 1,500.00       | 3.70           | 931.17              | 568.83         | 62.08       |
| 130-4310 OTHER INCOME                   | 0.00           | 0.00           | 0.00                | 0.00           | 0.00        |
| 130-4505 LEASE INCOME                   | 0.00           | 0.00           | 0.00                | 0.00           | 0.00        |
| 130-4550 INTEREST INCOME                | 500.00         | 0.00           | 282.14              | 217.86         | 56.43       |
| 130-4580 TRANSFER IN                    | 0.00           | 0.00           | 0.00                | 0.00           | 0.00        |
| 130-4591 INCOME APPLICABLE TO PRIOR YRS | 0.00           | 0.00           | 0.00                | 0.00           | 0.00        |
| 130-4955 Gain/Loss                      | 0.00           | 0.00           | 0.00                | 0.00           | 0.00        |
| TOTAL REVENUES                          | 1,677,221.00   | 98,255.95      | 744,715.31          | 932,505.69     | 44.40       |

REVENUE & EXPENSE REPORT (UNAUDITED)

AS OF: DECEMBER 31ST, 2017

130-WATER ENTERPRISE FUND

NON-DEPARTMENTAL

EXPENDITURES

|  | CURRENT<br>BUDGET | CURRENT<br>PERIOD | YEAR TO DATE<br>ACTUAL | BUDGET<br>BALANCE | % OF<br>BUDGET |
|--|-------------------|-------------------|------------------------|-------------------|----------------|
| 130-5-00-5010 SALARY & WAGES             | 0.00              | 0.00              | 0.00                   | 0.00              | 0.00           |
| 130-5-00-5020 EMPLOYEE BENEFITS          | 0.00              | 0.00              | 0.00                   | 0.00              | 0.00           |
| 130-5-00-5021 RETIREMENT BENEFITS        | 0.00              | 0.00              | 16.86 (                | 16.86)            | 0.00           |
| 130-5-00-5024 WORKERS' COMP INSURANCE    | 9,500.00          | 0.00              | 11,103.94 (            | 1,603.94)         | 116.88         |
| 130-5-00-5025 RETIREE HEALTH BENEFITS    | 10,400.00         | 872.88            | 8,299.26               | 2,100.74          | 79.80          |
| 130-5-00-5026 COBRA Health & Dental      | 0.00              | 0.00 (            | 33.72)                 | 33.72             | 0.00           |
| 130-5-00-5040 ELECTION EXPENSE           | 0.00              | 0.00              | 0.00                   | 0.00              | 0.00           |
| 130-5-00-5050 DEPRECIATION               | 0.00              | 0.00              | 0.00                   | 0.00              | 0.00           |
| 130-5-00-5060 GASOLINE, OIL & FUEL       | 6,000.00          | 798.28            | 2,677.44               | 3,322.56          | 44.62          |
| 130-5-00-5061 VEHICLE MAINT              | 7,500.00          | 0.00              | 6,740.06               | 759.94            | 89.87          |
| 130-5-00-5062 TAXES & LIC                | 1,200.00          | 403.92            | 708.65                 | 491.35            | 59.05          |
| 130-5-00-5074 INSURANCE                  | 25,000.00         | 0.00              | 20,611.41              | 4,388.59          | 82.45          |
| 130-5-00-5075 BANK FEES                  | 13,400.00         | 1,339.74          | 6,914.41               | 6,485.59          | 51.60          |
| 130-5-00-5080 MEMBERSHIP & SUBSCRIPTIONS | 21,000.00         | 3,459.00          | 17,194.80              | 3,805.20          | 81.88          |
| 130-5-00-5092 POSTAGE & SHIPPING         | 6,000.00          | 278.80            | 2,932.84               | 3,067.16          | 48.88          |
| 130-5-00-5110 CONTRACTUAL SERVICES       | 0.00              | 0.00              | 0.00                   | 0.00              | 0.00           |
| 130-5-00-5121 LEGAL SERVICES             | 10,000.00         | 708.75            | 2,508.75               | 7,491.25          | 25.09          |
| 130-5-00-5122 ENGINEERING SERVICES       | 60,000.00         | 0.00              | 297.50                 | 59,702.50         | 0.50           |
| 130-5-00-5123 OTHER PROFESSIONAL SERVICE | 35,000.00         | 2,504.42          | 12,642.64              | 22,357.36         | 36.12          |
| 130-5-00-5124 WATER RIGHTS               | 70,000.00         | 160.00            | 1,397.50               | 68,602.50         | 2.00           |
| 130-5-00-5126 AUDIT SERVICES             | 7,500.00          | 5,800.00          | 5,800.00               | 1,700.00          | 77.33          |
| 130-5-00-5130 PRINTING & PUBLICATION     | 7,750.00          | 49.94             | 1,608.69               | 6,141.31          | 20.76          |
| 130-5-00-5135 NEWSLETTER                 | 500.00            | 0.00              | 0.00                   | 500.00            | 0.00           |
| 130-5-00-5140 RENT & LEASES              | 0.00              | 0.00              | 0.00                   | 0.00              | 0.00           |
| 130-5-00-5145 EQUIPMENT RENTAL           | 17,500.00         | 489.13            | 1,521.80               | 15,978.20         | 8.70           |
| 130-5-00-5148 OPERATING SUPPLIES         | 1,400.00          | 0.00              | 1,996.06 (             | 596.06)           | 142.58         |
| 130-5-00-5150 REPAIR & REPLACE           | 185,000.00        | 10,559.91         | 68,767.23              | 116,232.77        | 37.17          |
| 130-5-00-5155 MAINT BLDG & GROUNDS       | 8,509.00          | 275.97            | 9,996.28 (             | 1,487.28)         | 117.48         |
| 130-5-00-5156 CUSTODIAL SERVICES         | 3,750.00          | 625.00            | 1,875.00               | 1,875.00          | 50.00          |
| 130-5-00-5157 SECURITY                   | 5,000.00          | 0.00              | 264.00                 | 4,736.00          | 5.28           |
| 130-5-00-5180 UNCOLLECTABLE ACCOUNTS     | 0.00              | 0.00              | 0.00                   | 0.00              | 0.00           |
| 130-5-00-5191 TELEPHONE                  | 9,100.00          | 959.30            | 5,926.22               | 3,173.78          | 65.12          |
| 130-5-00-5192 ELECTRICITY                | 107,711.00        | 15,550.98         | 69,810.51              | 37,900.49         | 64.81          |
| 130-5-00-5193 OTHER UTILITIES            | 2,200.00          | 186.17            | 929.87                 | 1,270.13          | 42.27          |
| 130-5-00-5194 IT SERVICES                | 24,500.00         | 232.00            | 25,900.71 (            | 1,400.71)         | 105.72         |
| 130-5-00-5195 ENV/MONITORING             | 15,000.00         | 1,105.00          | 5,003.44               | 9,996.56          | 33.36          |
| 130-5-00-5196 RISK MANAGEMENT            | 0.00              | 0.00              | 0.00                   | 0.00              | 0.00           |
| 130-5-00-5198 ANNUAL OPERATING FEES      | 30,000.00         | 14,340.00         | 14,340.00              | 15,660.00         | 47.80          |
| 130-5-00-5310 EQUIPMENT - FIELD          | 2,000.00          | 0.00              | 47.73                  | 1,952.27          | 2.39           |
| 130-5-00-5311 EQUIPMENT - OFFICE         | 1,000.00          | 0.00              | 0.00                   | 1,000.00          | 0.00           |
| 130-5-00-5312 TOOLS - FIELD              | 2,000.00          | 0.00              | 0.00                   | 2,000.00          | 0.00           |
| 130-5-00-5315 SAFETY EQUIPMENT           | 2,500.00          | 273.95            | 1,396.49               | 1,103.51          | 55.86          |
| 130-5-00-5505 WATER CONSERVATION         | 9,000.00          | 0.00              | 3,800.16               | 5,199.84          | 42.22          |
| 130-5-00-5545 RECORDING FEES             | 250.00            | 0.00              | 57.50                  | 192.50            | 23.00          |
| 130-5-00-5580 TRANSFERS OUT              | 0.00              | 0.00              | 0.00                   | 0.00              | 0.00           |
| 130-5-00-5590 NON-OPERATING OTHER        | 0.00              | 0.00              | 0.00                   | 0.00              | 0.00           |
| 130-5-00-5591 EXPENSES APPLICABLE TO PRI | 0.00              | 0.00              | 0.00                   | 0.00              | 0.00           |
| 130-5-00-5600 CONTINGENCY                | 45,000.00         | 0.00              | 0.00                   | 45,000.00         | 0.00           |
| 130-5-00-5650 OPERATING RESERVES         | 0.00              | 0.00              | 0.00                   | 0.00              | 0.00           |

HIDDEN VALLEY LAKE CSD  
REVENUE & EXPENSE REPORT (UNAUDITED)  
AS OF: DECEMBER 31ST, 2017

130-WATER ENTERPRISE FUND  
NON-DEPARTMENTAL  
EXPENDITURES

---

|                        | CURRENT<br>BUDGET | CURRENT<br>PERIOD | YEAR TO DATE<br>ACTUAL | BUDGET<br>BALANCE | % OF<br>BUDGET |
|------------------------|-------------------|-------------------|------------------------|-------------------|----------------|
| TOTAL NON-DEPARTMENTAL | 762,170.00        | 60,973.14         | 313,054.03             | 449,115.97        | 41.07          |

---

130-WATER ENTERPRISE FUND  
 ADMINISTRATION  
 EXPENDITURES

|                                    | CURRENT<br>BUDGET | CURRENT<br>PERIOD | YEAR TO DATE<br>ACTUAL | BUDGET<br>BALANCE | % OF<br>BUDGET |
|------------------------------------|-------------------|-------------------|------------------------|-------------------|----------------|
| 130-5-10-5010 SALARIES & WAGES     | 166,418.40        | 17,940.42         | 117,542.34             | 48,876.06         | 70.63          |
| 130-5-10-5020 EMPLOYEE BENEFITS    | 70,000.00         | 6,157.62          | 39,996.25              | 30,003.75         | 57.14          |
| 130-5-10-5021 RETIREMENT BENEFITS  | 40,498.00         | 3,592.66          | 22,722.35              | 17,775.65         | 56.11          |
| 130-5-10-5063 CERTIFICATIONS       | 0.00              | 0.00              | 0.00                   | 0.00              | 0.00           |
| 130-5-10-5090 OFFICE SUPPLIES      | 4,000.00          | 339.27            | 1,876.66               | 2,123.34          | 46.92          |
| 130-5-10-5170 TRAVEL MILEAGE       | 3,000.00          | 19.10             | 187.22                 | 2,812.78          | 6.24           |
| 130-5-10-5175 EDUCATION / SEMINARS | 5,000.00          | 101.88            | 1,131.89               | 3,868.11          | 22.64          |
| 130-5-10-5179 ADM MISC EXPENSES    | 350.00            | 30.03             | 83.70                  | 266.30            | 23.91          |
| 130-5-10-5505 WATER CONSERVATION   | 9,000.00          | 0.00              | 0.00                   | 9,000.00          | 0.00           |
| <b>TOTAL ADMINISTRATION</b>        | <b>298,266.40</b> | <b>28,180.98</b>  | <b>183,540.41</b>      | <b>114,725.99</b> | <b>61.54</b>   |



HIDDEN VALLEY LAKE CSD  
 REVENUE & EXPENSE REPORT (UNAUDITED)  
 AS OF: DECEMBER 31ST, 2017

130-WATER ENTERPRISE FUND  
 OFFICE  
 EXPENDITURES

|                                 | CURRENT<br>BUDGET | CURRENT<br>PERIOD | YEAR TO DATE<br>ACTUAL | BUDGET<br>BALANCE | % OF<br>BUDGET |
|---------------------------------|-------------------|-------------------|------------------------|-------------------|----------------|
| 130-5-20-5010 SALARIES & WAGES  | 0.00              | 0.00              | 0.00                   | 0.00              | 0.00           |
| 130-5-20-5020 EMPLOYEE BENEFITS | 0.00              | 0.00              | 0.00                   | 0.00              | 0.00           |
| TOTAL OFFICE                    | 0.00              | 0.00              | 0.00                   | 0.00              | 0.00           |

HIDDEN VALLEY LAKE CSD  
REVENUE & EXPENSE REPORT (UNAUDITED)  
AS OF: DECEMBER 31ST, 2017

## 130-WATER ENTERPRISE FUND

FIELD

EXPENDITURES

|                                    | CURRENT<br>BUDGET | CURRENT<br>PERIOD | YEAR TO DATE<br>ACTUAL | BUDGET<br>BALANCE | % OF<br>BUDGET |
|------------------------------------|-------------------|-------------------|------------------------|-------------------|----------------|
| 130-5-30-5010 SALARIES & WAGES     | 211,538.80        | 15,688.42         | 101,505.86             | 110,032.94        | 47.98          |
| 130-5-30-5020 EMPLOYEE BENEFITS    | 39,094.00         | 3,394.86          | 22,295.74              | 16,798.26         | 57.03          |
| 130-5-30-5021 RETIREMENT BENEFITS  | 46,498.00         | 3,335.37          | 21,282.87              | 25,215.13         | 45.77          |
| 130-5-30-5022 CLOTHING ALLOWANCE   | 1,800.00          | 0.00              | 1,227.83               | 572.17            | 68.21          |
| 130-5-30-5063 CERTIFICATIONS       | 600.00            | 0.00              | 85.00                  | 515.00            | 14.17          |
| 130-5-30-5090 OFFICE SUPPLIES      | 1,000.00          | 56.63             | 103.74                 | 896.26            | 10.37          |
| 130-5-30-5170 TRAVEL MILEAGE       | 500.00            | 0.00              | 163.38                 | 336.62            | 32.68          |
| 130-5-30-5175 EDUCATION / SEMINARS | 3,000.00          | 0.00              | 117.47                 | 2,882.53          | 3.92           |
| <b>TOTAL FIELD</b>                 | <b>304,030.80</b> | <b>22,475.28</b>  | <b>146,781.89</b>      | <b>157,248.91</b> | <b>48.28</b>   |

HIDDEN VALLEY LAKE CSD  
REVENUE & EXPENSE REPORT (UNAUDITED)  
AS OF: DECEMBER 31ST, 2017

130-WATER ENTERPRISE FUND

DIRECTORS

EXPENDITURES

|   | CURRENT<br>BUDGET | CURRENT<br>PERIOD | YEAR TO DATE<br>ACTUAL | BUDGET<br>BALANCE | % OF<br>BUDGET |
|---|-------------------|-------------------|------------------------|-------------------|----------------|
| <hr/>                                   |                   |                   |                        |                   |                |
| 130-5-40-5010 DIRECTORS COMPENSATION    | 3,000.00          | 166.85            | 1,001.10               | 1,998.90          | 33.37          |
| 130-5-40-5020 DIRECTOR BENEFITS         | 100.00            | 6.04              | 36.05                  | 63.95             | 36.05          |
| 130-5-40-5030 DIRECTOR HEALTH BENEFITS  | 38,556.00         | 3,261.45          | 21,621.45              | 16,934.55         | 56.08          |
| 130-5-40-5080 MEMBERSHIP & SUBSCRIPTION | 0.00              | 0.00              | 0.00                   | 0.00              | 0.00           |
| 130-5-40-5170 TRAVEL MILEAGE            | 500.00            | 0.00              | 132.61                 | 367.39            | 26.52          |
| 130-5-40-5175 EDUCATION / SEMINARS      | 0.00              | 0.00              | 0.00                   | 0.00              | 0.00           |
| 130-5-40-5176 DIRECTOR TRAINING         | 1,500.00          | 0.00              | 300.00                 | 1,200.00          | 20.00          |
| <hr/>                                   |                   |                   |                        |                   |                |
| TOTAL DIRECTORS                         | 43,656.00         | 3,434.34          | 23,091.21              | 20,564.79         | 52.89          |
| <hr/>                                   |                   |                   |                        |                   |                |
| TOTAL EXPENDITURES                      | 1,408,123.20      | 115,063.74        | 666,467.54             | 741,655.66        | 47.33          |
|   | =====             | =====             | =====                  | =====             | =====          |
| REVENUES OVER/(UNDER) EXPENDITURES      | 269,097.80 (      | 16,807.79)        | 78,247.77              | 190,850.03        | 29.08          |
|   | =====             | =====             | =====                  | =====             | =====          |

\*\*\* END OF REPORT \*\*\*



HIDDEN VALLEY LAKE COMMUNITY SERVICES DISTRICT

December, 2017  
FINANCIAL REPORT  
POOLED CASH

AS OF December 31, 2017

|                               |                   |
|-------------------------------|-------------------|
| <b>Beginning Balance</b>      | <b>844,669.69</b> |
| <b>Cash Receipts</b>          |                   |
| Deposit                       | 253,248.22        |
| Transfers                     | 0.00              |
| <b>Total Receipts</b>         | <b>253,248.22</b> |
| <b>Cash Disbursements</b>     |                   |
| Accounts Payable + Bank Draft | 491,189.34        |
| Payroll                       | 46,836.68         |
| Bank Fees                     | 2,679.50          |
| <b>Total Disbursements</b>    | <b>540,705.52</b> |
| <b>Ending Balance</b>         | <b>557,212.39</b> |

**TEMPORARY INVESTMENTS**

AS OF December 31, 2017

| Fund                                | LAIF              | Money Mkt         | Total               | G/L Bal             |
|-------------------------------------|-------------------|-------------------|---------------------|---------------------|
| 120 Sewer Operating Fund            | 68,015.63         | 48,552.07         | 116,567.70          | 116,567.70          |
| 130 Water Operating Fund            | 101,363.09        | 27,519.91         | 128,883.00          | 128,883.00          |
| 215 1995-2 Redemption               | 61,506.56         | 102,031.49        | 163,538.05          | 163,538.05          |
| 218 CIEDB Redemption                | 11,637.07         | -                 | 11,637.07           | 11,637.07           |
| 219 USDARUS Solar Loan (Sewer)      | 828.20            | 87,406.43         | 88,234.64           | 88,234.64           |
| 313 Wastewater Cap Fac Reserved     | 261,490.78        | 76,044.04         | 337,534.82          | 337,534.82          |
| 314 Wastewater Cap Fac Unrestricted | 264,180.14        | 180,930.68        | 445,110.82          | 445,110.82          |
| 319 Solar Reserve                   | -                 | 31,249.20         | 31,249.20           | 31,249.20           |
| 320 Water Capital Fund              | -                 | -                 | -                   | -                   |
| 350 CIEDB Loan Reserve              | 173,046.24        | -                 | 173,046.24          | 173,046.24          |
| 711 Bond Administration             | 27,446.56         | 4,756.98          | 32,203.55           | 32,203.55           |
| <b>TOTAL</b>                        | <b>969,514.28</b> | <b>558,490.80</b> | <b>1,528,005.08</b> | <b>1,528,005.08</b> |

COMPANY: 999 - POOLED CASH FUND  
ACCOUNT: 1010 CASH - POOLED  
TYPE: All  
STATUS: All  
FOLIO: All

CHECK DATE: 12/01/2017 THRU 12/31/2017  
CLEAR DATE: 0/00/0000 THRU 99/99/9999  
STATEMENT: 0/00/0000 THRU 99/99/9999  
VOIDED DATE: 0/00/0000 THRU 99/99/9999  
AMOUNT: 0.00 THRU 999,999,999.99  
CHECK NUMBER: 000000 THRU 999999

| ACCOUNT            | --DATE--   | --TYPE--   | NUMBER | -----DESCRIPTION-----          | -----AMOUNT--- | STATUS  | FOLIO | CLEAR DATE |
|--------------------|------------|------------|--------|--------------------------------|----------------|---------|-------|------------|
| <b>BANK DRAFT:</b> |            |            |        |                                |                |         |       |            |
| 1010               | 12/08/2017 | BANK-DRAFT | 000132 | CALIFORNIA PUBLIC EMPLOYEES RE | 4,838.59CR     | CLEARED | A     | 12/11/2017 |
| 1010               | 12/08/2017 | BANK-DRAFT | 000133 | NATIONWIDE RETIREMENT SOLUTION | 1,150.00CR     | CLEARED | A     | 12/08/2017 |
| 1010               | 12/08/2017 | BANK-DRAFT | 000134 | STATE OF CALIFORNIA EDD        | 1,228.95CR     | CLEARED | A     | 12/08/2017 |
| 1010               | 12/08/2017 | BANK-DRAFT | 000135 | US DEPARTMENT OF THE TREASURY  | 4,381.79CR     | CLEARED | A     | 12/08/2017 |
| 1010               | 12/22/2017 | BANK-DRAFT | 000136 | CALIFORNIA PUBLIC EMPLOYEES RE | 4,828.94CR     | CLEARED | A     | 12/26/2017 |
| 1010               | 12/22/2017 | BANK-DRAFT | 000137 | NATIONWIDE RETIREMENT SOLUTION | 815.00CR       | CLEARED | A     | 12/22/2017 |
| 1010               | 12/22/2017 | BANK-DRAFT | 000138 | STATE OF CALIFORNIA EDD        | 1,316.73CR     | CLEARED | A     | 12/22/2017 |
| 1010               | 12/22/2017 | BANK-DRAFT | 000139 | US DEPARTMENT OF THE TREASURY  | 4,491.19CR     | OUTSTND | A     | 0/00/0000  |
| <b>CHECK:</b>      |            |            |        |                                |                |         |       |            |
| 1010               | 12/01/2017 | CHECK      | 035057 | ALPHA ANALYTICAL LABORATORIES  | 764.00CR       | CLEARED | A     | 12/06/2017 |
| 1010               | 12/01/2017 | CHECK      | 035058 | AT&T MOBILITY                  | 64.64CR        | CLEARED | A     | 12/06/2017 |
| 1010               | 12/01/2017 | CHECK      | 035059 | STATE BOARD OF EQUALIZATION    | 777.15CR       | CLEARED | A     | 12/06/2017 |
| 1010               | 12/01/2017 | CHECK      | 035060 | CAL FIRE - KONOCTI CAMP        | 1,142.00CR     | CLEARED | A     | 12/19/2017 |
| 1010               | 12/01/2017 | CHECK      | 035061 | CALIFORNIA SPECIAL DISTRICTS A | 6,358.00CR     | CLEARED | A     | 12/15/2017 |
| 1010               | 12/01/2017 | CHECK      | 035062 | E & M ELECTRIC & MACHINERY, IN | 2,311.93CR     | CLEARED | A     | 12/05/2017 |
| 1010               | 12/01/2017 | CHECK      | 035063 | HACH COMPANY                   | 253.97CR       | CLEARED | A     | 12/05/2017 |
| 1010               | 12/01/2017 | CHECK      | 035064 | JAMES DAY CONSTRUCTION, INC.   | 8,355.00CR     | CLEARED | A     | 12/04/2017 |
| 1010               | 12/01/2017 | CHECK      | 035065 | KELLER CANYON LANDFILL         | 5,529.93CR     | CLEARED | A     | 12/05/2017 |
| 1010               | 12/01/2017 | CHECK      | 035066 | LAKE COUNTY WASTE SOLUTIONS    | 228.60CR       | CLEARED | A     | 12/06/2017 |
| 1010               | 12/01/2017 | CHECK      | 035067 | MICHELLE HAMILTON              | 625.00CR       | CLEARED | A     | 12/18/2017 |
| 1010               | 12/01/2017 | CHECK      | 035068 | OFFICE DEPOT                   | 323.81CR       | CLEARED | A     | 12/07/2017 |
| 1010               | 12/01/2017 | CHECK      | 035069 | PACE SUPPLY CORP               | 839.23CR       | CLEARED | A     | 12/05/2017 |
| 1010               | 12/01/2017 | CHECK      | 035070 | PACIFIC GAS & ELECTRIC COMPANY | 11,164.44CR    | CLEARED | A     | 12/05/2017 |
| 1010               | 12/01/2017 | CHECK      | 035071 | RAY MORGAN COMPANY             | 193.54CR       | CLEARED | A     | 12/06/2017 |
| 1010               | 12/01/2017 | CHECK      | 035072 | REDFORD SERVICES               | 950.00CR       | CLEARED | A     | 12/15/2017 |
| 1010               | 12/01/2017 | CHECK      | 035073 | REGIONAL GOVERNMENT SERVICES   | 58.85CR        | CLEARED | A     | 12/07/2017 |
| 1010               | 12/01/2017 | CHECK      | 035074 | RICOH USA, INC.                | 398.45CR       | CLEARED | A     | 12/06/2017 |
| 1010               | 12/01/2017 | CHECK      | 035075 | SPECIAL DISTRICT RISK MANAGEME | 393.79CR       | CLEARED | A     | 12/07/2017 |
| 1010               | 12/01/2017 | CHECK      | 035076 | TYLER TECHNOLOGY               | 121.00CR       | CLEARED | A     | 12/05/2017 |
| 1010               | 12/01/2017 | CHECK      | 035077 | USA BLUE BOOK                  | 547.93CR       | CLEARED | A     | 12/07/2017 |
| 1010               | 12/01/2017 | CHECK      | 035078 | WAGNER & BONSIGNORE            | 160.00CR       | CLEARED | A     | 12/11/2017 |
| 1010               | 12/01/2017 | CHECK      | 035079 | WESTGATE PETROLEUM CO., INC.   | 1,552.31CR     | CLEARED | A     | 12/05/2017 |
| 1010               | 12/01/2017 | CHECK      | 035080 | HERBST, ROBERT ALAN            | 114.68CR       | CLEARED | A     | 12/15/2017 |
| 1010               | 12/01/2017 | CHECK      | 035081 | STEWART, BETTY                 | 82.07CR        | CLEARED | A     | 1/08/2018  |
| 1010               | 12/01/2017 | CHECK      | 035082 | WEBER, TIM & CINDY             | 124.84CR       | CLEARED | A     | 12/06/2017 |
| 1010               | 12/01/2017 | CHECK      | 035083 | BECKWITH, DAN                  | 525.84CR       | CLEARED | A     | 12/08/2017 |
| 1010               | 12/08/2017 | CHECK      | 035084 | ACTION SANITARY, INC.          | 123.34CR       | CLEARED | A     | 12/13/2017 |
| 1010               | 12/08/2017 | CHECK      | 035085 | ALPHA ANALYTICAL LABORATORIES  | 955.00CR       | CLEARED | A     | 12/13/2017 |
| 1010               | 12/08/2017 | CHECK      | 035086 | BARTLEY PUMP, INC.             | 5,200.72CR     | CLEARED | A     | 12/14/2017 |
| 1010               | 12/08/2017 | CHECK      | 035087 | COASTLAND CIVIL ENGINEERING, I | 1,020.00CR     | CLEARED | A     | 12/12/2017 |
| 1010               | 12/08/2017 | CHECK      | 035088 | COUNTY OF LAKE - LAKE COUNTY S | 302,390.00CR   | CLEARED | A     | 12/29/2017 |
| 1010               | 12/08/2017 | CHECK      | 035089 | COUNTY OF LAKE HEALTH SERVICES | 1,722.00CR     | CLEARED | A     | 12/19/2017 |
| 1010               | 12/08/2017 | CHECK      | 035090 | COUNTY OF LAKE HEALTH SERVICES | 1,057.00CR     | CLEARED | A     | 12/19/2017 |

COMPANY: 999 - POOLED CASH FUND  
ACCOUNT: 1010 CASH - POOLED  
TYPE: All  
STATUS: All  
FOLIO: All

CHECK DATE: 12/01/2017 THRU 12/31/2017  
CLEAR DATE: 0/00/0000 THRU 99/99/9999  
STATEMENT: 0/00/0000 THRU 99/99/9999  
VOIDED DATE: 0/00/0000 THRU 99/99/9999  
AMOUNT: 0.00 THRU 999,999,999.99  
CHECK NUMBER: 000000 THRU 999999

| ACCOUNT | --DATE--   | --TYPE-- | NUMBER | -----DESCRIPTION-----          | -----AMOUNT---- | STATUS  | FOLIO | CLEAR DATE |
|---------|------------|----------|--------|--------------------------------|-----------------|---------|-------|------------|
| CHECK:  |            |          |        |                                |                 |         |       |            |
| 1010    | 12/08/2017 | CHECK    | 035091 | GHD                            | 3,469.50CR      | CLEARED | A     | 12/13/2017 |
| 1010    | 12/08/2017 | CHECK    | 035092 | HARDESTER'S MARKETS & HARDWARE | 188.58CR        | CLEARED | A     | 12/13/2017 |
| 1010    | 12/08/2017 | CHECK    | 035093 | LIQUIVISION TECHNOLOGY INC.    | 8,675.00CR      | CLEARED | A     | 12/13/2017 |
| 1010    | 12/08/2017 | CHECK    | 035094 | MEDIACOM                       | 426.92CR        | CLEARED | A     | 12/13/2017 |
| 1010    | 12/08/2017 | CHECK    | 035095 | MENDO MILL CLEARLAKE           | 132.68CR        | CLEARED | A     | 12/11/2017 |
| 1010    | 12/08/2017 | CHECK    | 035096 | SMITH & NEWELL CPA             | 11,600.00CR     | CLEARED | A     | 12/18/2017 |
| 1010    | 12/08/2017 | CHECK    | 035097 | SOUTH LAKE REFUSE COMPANY      | 372.36CR        | CLEARED | A     | 12/12/2017 |
| 1010    | 12/08/2017 | CHECK    | 035098 | STREAMLINE                     | 200.00CR        | CLEARED | A     | 12/12/2017 |
| 1010    | 12/08/2017 | CHECK    | 035099 | EVERT, SUMMER                  | 6.44CR          | OUTSTND | A     | 0/00/0000  |
| 1010    | 12/08/2017 | CHECK    | 035100 | FLYNN, KERRY                   | 45.60CR         | CLEARED | A     | 12/20/2017 |
| 1010    | 12/08/2017 | CHECK    | 035101 | KEEFER, CARLA                  | 21.61CR         | CLEARED | A     | 12/14/2017 |
| 1010    | 12/08/2017 | CHECK    | 035102 | KREIGHBAUM, JUSTIN D           | 18.28CR         | CLEARED | A     | 12/15/2017 |
| 1010    | 12/08/2017 | CHECK    | 035103 | MARINARO, CHERYL               | 553.35CR        | CLEARED | A     | 12/12/2017 |
| 1010    | 12/08/2017 | CHECK    | 035104 | SELLERS, DIANA L               | 139.04CR        | CLEARED | A     | 12/14/2017 |
| 1010    | 12/15/2017 | CHECK    | 035105 | ACWA/JPIA                      | 885.91CR        | CLEARED | A     | 12/19/2017 |
| 1010    | 12/15/2017 | CHECK    | 035106 | ALPHA ANALYTICAL LABORATORIES  | 913.00CR        | CLEARED | A     | 12/20/2017 |
| 1010    | 12/15/2017 | CHECK    | 035107 | VOID CHECK                     | 0.00            | CLEARED | A     | 12/15/2017 |
| 1010    | 12/15/2017 | CHECK    | 035108 | AT&T                           | 15.92CR         | CLEARED | A     | 12/20/2017 |
| 1010    | 12/15/2017 | CHECK    | 035109 | BADGER METER                   | 81.00CR         | CLEARED | A     | 12/26/2017 |
| 1010    | 12/15/2017 | CHECK    | 035110 | BOLD POLISNER MADDOW NELSON &  | 1,417.50CR      | CLEARED | A     | 12/20/2017 |
| 1010    | 12/15/2017 | CHECK    | 035111 | CALIFORNIA PUBLIC EMPLOYEES FI | 8,304.91CR      | CLEARED | A     | 12/20/2017 |
| 1010    | 12/15/2017 | CHECK    | 035112 | CARDMEMBER SERVICE             | 1,806.08CR      | CLEARED | A     | 12/20/2017 |
| 1010    | 12/15/2017 | CHECK    | 035113 | COASTLAND CIVIL ENGINEERING, I | 382.50CR        | CLEARED | A     | 12/19/2017 |
| 1010    | 12/15/2017 | CHECK    | 035114 | DATAPROSE                      | 461.49CR        | CLEARED | A     | 12/19/2017 |
| 1010    | 12/15/2017 | CHECK    | 035115 | GARDENS BY JILLIAN             | 200.00CR        | CLEARED | A     | 1/02/2018  |
| 1010    | 12/15/2017 | CHECK    | 035116 | OFFICE DEPOT                   | 123.03CR        | CLEARED | A     | 12/26/2017 |
| 1010    | 12/15/2017 | CHECK    | 035117 | PACE SUPPLY CORP               | 418.53CR        | CLEARED | A     | 12/19/2017 |
| 1010    | 12/15/2017 | CHECK    | 035118 | REGIONAL GOVERNMENT SERVICES   | 1,430.00CR      | CLEARED | A     | 12/19/2017 |
| 1010    | 12/15/2017 | CHECK    | 035119 | SWRCB                          | 11,195.00CR     | CLEARED | A     | 12/28/2017 |
| 1010    | 12/15/2017 | CHECK    | 035120 | SWRCB                          | 2,088.00CR      | CLEARED | A     | 12/28/2017 |
| 1010    | 12/15/2017 | CHECK    | 035121 | WIPF CONSTRUCTION              | 6,047.15CR      | CLEARED | A     | 12/21/2017 |
| 1010    | 12/15/2017 | CHECK    | 035122 | MULLER, WALTER L               | 12.53CR         | CLEARED | A     | 1/05/2018  |
| 1010    | 12/15/2017 | CHECK    | 035123 | BAINTER, DOLORES               | 115.90CR        | CLEARED | A     | 12/21/2017 |
| 1010    | 12/22/2017 | CHECK    | 035124 | ALPHA ANALYTICAL LABORATORIES  | 1,142.00CR      | CLEARED | A     | 12/28/2017 |
| 1010    | 12/22/2017 | CHECK    | 035125 | BENNETT SOLUTIONS              | 60.06CR         | OUTSTND | A     | 0/00/0000  |
| 1010    | 12/22/2017 | CHECK    | 035126 | FASTRAK INVOICE PROCESSING     | 7.75CR          | CLEARED | A     | 12/28/2017 |
| 1010    | 12/22/2017 | CHECK    | 035127 | LAKE COUNTY VECTOR CONTROL DIS | 30.72CR         | OUTSTND | A     | 0/00/0000  |
| 1010    | 12/22/2017 | CHECK    | 035128 | REGIONAL GOVERNMENT SERVICES   | 3,520.00CR      | CLEARED | A     | 12/28/2017 |
| 1010    | 12/22/2017 | CHECK    | 035129 | RICOH USA, INC.                | 386.29CR        | CLEARED | A     | 1/02/2018  |
| 1010    | 12/22/2017 | CHECK    | 035130 | SIERRA CHEMICAL CO.            | 1,965.41CR      | CLEARED | A     | 12/29/2017 |
| 1010    | 12/22/2017 | CHECK    | 035131 | SPECIAL DISTRICT RISK MANAGEME | 27,122.82CR     | CLEARED | A     | 12/29/2017 |
| 1010    | 12/22/2017 | CHECK    | 035132 | TYLER TECHNOLOGY               | 121.00CR        | CLEARED | A     | 12/27/2017 |
| 1010    | 12/22/2017 | CHECK    | 035133 | U S POSTMASTER                 | 196.00CR        | CLEARED | A     | 1/03/2018  |
| 1010    | 12/22/2017 | CHECK    | 035134 | VERIZON WIRELESS               | 1,346.49CR      | CLEARED | A     | 12/29/2017 |

COMPANY: 999 - POOLED CASH FUND  
 ACCOUNT: 1010 CASH - POOLED  
 TYPE: All  
 STATUS: All  
 FOLIO: All

CHECK DATE: 12/01/2017 THRU 12/31/2017  
 CLEAR DATE: 0/00/0000 THRU 99/99/9999  
 STATEMENT: 0/00/0000 THRU 99/99/9999  
 VOIDED DATE: 0/00/0000 THRU 99/99/9999  
 AMOUNT: 0.00 THRU 999,999,999.99  
 CHECK NUMBER: 000000 THRU 999999

| ACCOUNT  | --DATE--   | --TYPE-- | NUMBER | -----DESCRIPTION-----          | -----AMOUNT--- | STATUS  | FOLIO | CLEAR DATE |
|----------|------------|----------|--------|--------------------------------|----------------|---------|-------|------------|
| CHECK:   |            |          |        |                                |                |         |       |            |
| 1010     | 12/22/2017 | CHECK    | 035135 | JACOBS, ROBERT                 | 2.86CR         | CLEARED | A     | 1/04/2018  |
| 1010     | 12/22/2017 | CHECK    | 035136 | MURPHY, MONTY K                | 4.69CR         | CLEARED | A     | 1/02/2018  |
| 1010     | 12/22/2017 | CHECK    | 035137 | PERKINS, JON                   | 6.04CR         | OUTSTND | A     | 0/00/0000  |
| 1010     | 12/29/2017 | CHECK    | 035138 | ALPHA ANALYTICAL LABORATORIES  | 534.00CR       | OUTSTND | A     | 0/00/0000  |
| 1010     | 12/29/2017 | CHECK    | 035139 | AT&T MOBILITY                  | 64.64CR        | CLEARED | A     | 1/04/2018  |
| 1010     | 12/29/2017 | CHECK    | 035140 | MICHELLE HAMILTON              | 625.00CR       | OUTSTND | A     | 0/00/0000  |
| 1010     | 12/29/2017 | CHECK    | 035141 | NBS GOVERNMENT FINANCE GROUP   | 1,803.06CR     | CLEARED | A     | 1/04/2018  |
| 1010     | 12/29/2017 | CHECK    | 035142 | OFFICE DEPOT                   | 343.04CR       | CLEARED | A     | 1/04/2018  |
| 1010     | 12/29/2017 | CHECK    | 035143 | PACIFIC GAS & ELECTRIC COMPANY | 9,274.27CR     | CLEARED | A     | 1/04/2018  |
| 1010     | 12/29/2017 | CHECK    | 035144 | REDFORD SERVICES               | 950.00CR       | OUTSTND | A     | 0/00/0000  |
| 1010     | 12/29/2017 | CHECK    | 035145 | SPECIAL DISTRICT RISK MANAGEME | 393.79CR       | CLEARED | A     | 1/08/2018  |
| 1010     | 12/29/2017 | CHECK    | 035146 | ZOLLO, STEPHANIE               | 61.35CR        | OUTSTND | A     | 0/00/0000  |
| DEPOSIT: |            |          |        |                                |                |         |       |            |
| 1010     | 12/01/2017 | DEPOSIT  |        | CREDIT CARD 12/01/2017         | 3,012.20       | CLEARED | C     | 12/04/2017 |
| 1010     | 12/01/2017 | DEPOSIT  | 000001 | CREDIT CARD 12/01/2017         | 1,355.10       | CLEARED | C     | 12/04/2017 |
| 1010     | 12/01/2017 | DEPOSIT  | 000002 | REGULAR DAILY POST 12/01/2017  | 1,936.34       | CLEARED | C     | 12/04/2017 |
| 1010     | 12/04/2017 | DEPOSIT  |        | CREDIT CARD 12/04/2017         | 2,501.00       | CLEARED | C     | 12/04/2017 |
| 1010     | 12/04/2017 | DEPOSIT  | 000001 | CREDIT CARD 12/04/2017         | 1,458.20       | CLEARED | C     | 12/05/2017 |
| 1010     | 12/04/2017 | DEPOSIT  | 000002 | CREDIT CARD 12/04/2017         | 550.93         | CLEARED | C     | 12/06/2017 |
| 1010     | 12/04/2017 | DEPOSIT  | 000003 | CREDIT CARD 12/04/2017         | 1,778.62       | CLEARED | C     | 12/07/2017 |
| 1010     | 12/04/2017 | DEPOSIT  | 000004 | REGULAR DAILY POST 12/04/2017  | 4,008.08       | CLEARED | C     | 12/05/2017 |
| 1010     | 12/05/2017 | DEPOSIT  |        | CREDIT CARD 12/05/2017         | 2,208.35       | CLEARED | C     | 12/07/2017 |
| 1010     | 12/06/2017 | DEPOSIT  |        | CREDIT CARD 12/06/2017         | 4,442.66       | CLEARED | C     | 12/08/2017 |
| 1010     | 12/06/2017 | DEPOSIT  | 000001 | REGULAR DAILY POST 12/06/2017  | 5,046.55       | CLEARED | C     | 12/06/2017 |
| 1010     | 12/06/2017 | DEPOSIT  | 000002 | CREDIT CARD 12/06/2017         | 4,250.91       | CLEARED | C     | 12/08/2017 |
| 1010     | 12/06/2017 | DEPOSIT  | 000003 | CREDIT CARD 12/06/2017         | 1,973.27       | CLEARED | C     | 12/11/2017 |
| 1010     | 12/06/2017 | DEPOSIT  | 000004 | CREDIT CARD 12/06/2017         | 7,930.96       | CLEARED | C     | 12/11/2017 |
| 1010     | 12/06/2017 | DEPOSIT  | 000005 | REGULAR DAILY POST 12/06/2017  | 7,628.54       | CLEARED | C     | 12/07/2017 |
| 1010     | 12/07/2017 | DEPOSIT  |        | CREDIT CARD 12/07/2017         | 891.68         | CLEARED | C     | 12/11/2017 |
| 1010     | 12/07/2017 | DEPOSIT  | 000001 | CREDIT CARD 12/07/2017         | 2,405.69       | CLEARED | C     | 12/11/2017 |
| 1010     | 12/07/2017 | DEPOSIT  | 000002 | REGULAR DAILY POST 12/07/2017  | 6,788.08       | CLEARED | C     | 12/08/2017 |
| 1010     | 12/08/2017 | DEPOSIT  |        | CREDIT CARD 12/08/2017         | 1,720.16       | CLEARED | C     | 12/11/2017 |
| 1010     | 12/08/2017 | DEPOSIT  | 000001 | CREDIT CARD 12/08/2017         | 1,367.15       | CLEARED | C     | 12/11/2017 |
| 1010     | 12/08/2017 | DEPOSIT  | 000002 | REGULAR DAILY POST 12/08/2017  | 5,438.28       | CLEARED | C     | 12/11/2017 |
| 1010     | 12/11/2017 | DEPOSIT  |        | CREDIT CARD 12/11/2017         | 820.92         | CLEARED | C     | 12/11/2017 |
| 1010     | 12/11/2017 | DEPOSIT  | 000001 | CREDIT CARD 12/11/2017         | 949.12         | CLEARED | C     | 12/12/2017 |
| 1010     | 12/11/2017 | DEPOSIT  | 000002 | CREDIT CARD 12/11/2017         | 715.07         | CLEARED | C     | 12/13/2017 |
| 1010     | 12/11/2017 | DEPOSIT  | 000003 | REGULAR DAILY POST 12/11/2017  | 5,084.00       | CLEARED | C     | 12/11/2017 |
| 1010     | 12/11/2017 | DEPOSIT  | 000004 | CREDIT CARD 12/11/2017         | 1,192.94       | CLEARED | C     | 12/14/2017 |
| 1010     | 12/11/2017 | DEPOSIT  | 000005 | REGULAR DAILY POST 12/11/2017  | 14,686.97      | CLEARED | C     | 12/12/2017 |
| 1010     | 12/12/2017 | DEPOSIT  |        | CREDIT CARD 12/12/2017         | 826.09         | CLEARED | C     | 12/14/2017 |
| 1010     | 12/12/2017 | DEPOSIT  | 000001 | CREDIT CARD 12/12/2017         | 530.05         | CLEARED | C     | 12/15/2017 |
| 1010     | 12/12/2017 | DEPOSIT  | 000002 | REGULAR DAILY POST 12/12/2017  | 5,194.61       | CLEARED | C     | 12/13/2017 |

COMPANY: 999 - POOLED CASH FUND  
ACCOUNT: 1010 CASH - POOLED  
TYPE: All  
STATUS: All  
FOLIO: All

CHECK DATE: 12/01/2017 THRU 12/31/2017  
CLEAR DATE: 0/00/0000 THRU 99/99/9999  
STATEMENT: 0/00/0000 THRU 99/99/9999  
VOIDED DATE: 0/00/0000 THRU 99/99/9999  
AMOUNT: 0.00 THRU 999,999,999.99  
CHECK NUMBER: 000000 THRU 999999

| ACCOUNT  | --DATE--   | --TYPE-- | NUMBER | -----DESCRIPTION-----         | -----AMOUNT--- | STATUS  | FOLIO | CLEAR DATE |
|----------|------------|----------|--------|-------------------------------|----------------|---------|-------|------------|
| DEPOSIT: |            |          |        |                               |                |         |       |            |
| 1010     | 12/13/2017 | DEPOSIT  |        | CREDIT CARD 12/13/2017        | 916.75         | CLEARED | C     | 12/15/2017 |
| 1010     | 12/13/2017 | DEPOSIT  | 000001 | CREDIT CARD 12/13/2017        | 777.44         | CLEARED | C     | 12/18/2017 |
| 1010     | 12/13/2017 | DEPOSIT  | 000002 | REGULAR DAILY POST 12/13/2017 | 4,752.36       | CLEARED | C     | 12/14/2017 |
| 1010     | 12/14/2017 | DEPOSIT  |        | CREDIT CARD 12/14/2017        | 1,123.78       | CLEARED | C     | 12/18/2017 |
| 1010     | 12/14/2017 | DEPOSIT  | 000001 | CREDIT CARD 12/14/2017        | 1,150.17       | CLEARED | C     | 12/18/2017 |
| 1010     | 12/14/2017 | DEPOSIT  | 000002 | REGULAR DAILY POST 12/14/2017 | 3,996.56       | CLEARED | C     | 12/15/2017 |
| 1010     | 12/15/2017 | DEPOSIT  |        | CREDIT CARD 12/15/2017        | 1,198.31       | CLEARED | C     | 12/18/2017 |
| 1010     | 12/15/2017 | DEPOSIT  | 000001 | CREDIT CARD 12/15/2017        | 1,842.46       | CLEARED | C     | 12/18/2017 |
| 1010     | 12/15/2017 | DEPOSIT  | 000002 | REGULAR DAILY POST 12/15/2017 | 6,254.11       | CLEARED | C     | 12/18/2017 |
| 1010     | 12/15/2017 | DEPOSIT  | 000003 | CC DRAFT POSTING              | 15,729.41      | CLEARED | U     | 12/18/2017 |
| 1010     | 12/15/2017 | DEPOSIT  | 000004 | DRAFT POSTING                 | 10,438.96      | CLEARED | U     | 12/20/2017 |
| 1010     | 12/18/2017 | DEPOSIT  |        | CREDIT CARD 12/18/2017        | 2,344.98       | CLEARED | C     | 12/18/2017 |
| 1010     | 12/18/2017 | DEPOSIT  | 000001 | CREDIT CARD 12/18/2017        | 713.82         | CLEARED | C     | 12/19/2017 |
| 1010     | 12/18/2017 | DEPOSIT  | 000002 | CREDIT CARD 12/18/2017        | 1,204.28       | CLEARED | C     | 12/20/2017 |
| 1010     | 12/18/2017 | DEPOSIT  | 000003 | DAILY PAYMENT POSTING - ADJ   | 108.00CR       | CLEARED | U     | 12/18/2017 |
| 1010     | 12/18/2017 | DEPOSIT  | 000004 | DAILY PAYMENT POSTING - ADJ   | 43.57CR        | CLEARED | U     | 12/26/2017 |
| 1010     | 12/18/2017 | DEPOSIT  | 000005 | DAILY PAYMENT POSTING         | 43.57          | CLEARED | U     | 12/26/2017 |
| 1010     | 12/19/2017 | DEPOSIT  |        | CREDIT CARD 12/19/2017        | 4,213.47       | CLEARED | C     | 12/21/2017 |
| 1010     | 12/19/2017 | DEPOSIT  | 000001 | REGULAR DAILY POST 12/19/2017 | 14,136.81      | CLEARED | C     | 12/19/2017 |
| 1010     | 12/19/2017 | DEPOSIT  | 000002 | CREDIT CARD 12/19/2017        | 2,452.23       | CLEARED | C     | 12/21/2017 |
| 1010     | 12/19/2017 | DEPOSIT  | 000003 | CREDIT CARD 12/19/2017        | 2,653.26       | CLEARED | C     | 12/22/2017 |
| 1010     | 12/19/2017 | DEPOSIT  | 000004 | REGULAR DAILY POST 12/19/2017 | 7,232.33       | CLEARED | C     | 12/20/2017 |
| 1010     | 12/20/2017 | DEPOSIT  |        | CREDIT CARD 12/20/2017        | 2,679.64       | CLEARED | C     | 12/22/2017 |
| 1010     | 12/20/2017 | DEPOSIT  | 000001 | CREDIT CARD 12/20/2017        | 3,892.20       | CLEARED | C     | 12/26/2017 |
| 1010     | 12/20/2017 | DEPOSIT  | 000002 | REGULAR DAILY POST 12/20/2017 | 12,252.84      | CLEARED | C     | 12/21/2017 |
| 1010     | 12/20/2017 | DEPOSIT  | 000003 | CREDIT CARD 12/20/2017        | 4,097.41       | CLEARED | C     | 12/26/2017 |
| 1010     | 12/21/2017 | DEPOSIT  |        | CREDIT CARD 12/21/2017        | 1,667.80       | CLEARED | C     | 12/26/2017 |
| 1010     | 12/21/2017 | DEPOSIT  | 000001 | CREDIT CARD 12/21/2017        | 1,550.66       | CLEARED | C     | 12/26/2017 |
| 1010     | 12/21/2017 | DEPOSIT  | 000002 | REGULAR DAILY POST 12/21/2017 | 3,444.10       | CLEARED | C     | 12/22/2017 |
| 1010     | 12/22/2017 | DEPOSIT  |        | CREDIT CARD 12/22/2017        | 1,405.78       | CLEARED | C     | 12/26/2017 |
| 1010     | 12/22/2017 | DEPOSIT  | 000001 | CREDIT CARD 12/22/2017        | 1,070.05       | CLEARED | C     | 12/26/2017 |
| 1010     | 12/22/2017 | DEPOSIT  | 000002 | REGULAR DAILY POST 12/22/2017 | 1,544.32       | CLEARED | C     | 12/26/2017 |
| 1010     | 12/22/2017 | DEPOSIT  | 000003 | DAILY PAYMENT POSTING - ADJ   | 87.38CR        | CLEARED | U     | 12/22/2017 |
| 1010     | 12/26/2017 | DEPOSIT  |        | CREDIT CARD 12/26/2017        | 1,202.57       | CLEARED | C     | 12/26/2017 |
| 1010     | 12/26/2017 | DEPOSIT  | 000001 | CREDIT CARD 12/26/2017        | 821.06         | CLEARED | C     | 12/27/2017 |
| 1010     | 12/26/2017 | DEPOSIT  | 000002 | CREDIT CARD 12/26/2017        | 152.05         | CLEARED | C     | 12/28/2017 |
| 1010     | 12/26/2017 | DEPOSIT  | 000003 | To cover 711 1010 deficit     | 9,685.96       | CLEARED | G     | 12/26/2017 |
| 1010     | 12/26/2017 | DEPOSIT  | 000004 | To cover 215 1010 deficit     | 1,309.32       | CLEARED | G     | 12/26/2017 |
| 1010     | 12/26/2017 | DEPOSIT  | 000005 | To cover 319 1010 deficit     | 4,102.39       | CLEARED | G     | 12/26/2017 |
| 1010     | 12/26/2017 | DEPOSIT  | 000006 | CREDIT CARD 12/26/2017        | 676.46         | CLEARED | C     | 12/29/2017 |
| 1010     | 12/26/2017 | DEPOSIT  | 000007 | REGULAR DAILY POST 12/26/2017 | 2,844.72       | CLEARED | C     | 12/27/2017 |
| 1010     | 12/27/2017 | DEPOSIT  |        | CREDIT CARD 12/27/2017        | 1,213.57       | CLEARED | C     | 12/29/2017 |
| 1010     | 12/27/2017 | DEPOSIT  | 000001 | CREDIT CARD 12/27/2017        | 180.46         | CLEARED | C     | 1/02/2018  |
| 1010     | 12/27/2017 | DEPOSIT  | 000002 | REGULAR DAILY POST 12/27/2017 | 6,599.23       | CLEARED | C     | 12/28/2017 |



COMPANY: 999 - POOLED CASH FUND  
ACCOUNT: 1010 CASH - POOLED  
TYPE: All  
STATUS: All  
FOLIO: All

CHECK DATE: 12/01/2017 THRU 12/31/2017  
CLEAR DATE: 0/00/0000 THRU 99/99/9999  
STATEMENT: 0/00/0000 THRU 99/99/9999  
VOIDED DATE: 0/00/0000 THRU 99/99/9999  
AMOUNT: 0.00 THRU 999,999,999.99  
CHECK NUMBER: 000000 THRU 999999

| ACCOUNT                            | --DATE--   | --TYPE-- | NUMBER | -----DESCRIPTION-----         | ----AMOUNT---- | STATUS       | FOLIO | CLEAR DATE |
|------------------------------------|------------|----------|--------|-------------------------------|----------------|--------------|-------|------------|
| <b>DEPOSIT:</b>                    |            |          |        |                               |                |              |       |            |
| 1010                               | 12/28/2017 | DEPOSIT  |        | CREDIT CARD 12/28/2017        | 630.64         | CLEARED      | C     | 1/02/2018  |
| 1010                               | 12/28/2017 | DEPOSIT  | 000001 | CREDIT CARD 12/28/2017        | 919.82         | CLEARED      | C     | 1/02/2018  |
| 1010                               | 12/28/2017 | DEPOSIT  | 000002 | REGULAR DAILY POST 12/28/2017 | 788.16         | CLEARED      | C     | 12/29/2017 |
| 1010                               | 12/29/2017 | DEPOSIT  |        | CREDIT CARD 12/29/2017        | 2,412.17       | CLEARED      | C     | 1/02/2018  |
| 1010                               | 12/29/2017 | DEPOSIT  | 000001 | CREDIT CARD 12/29/2017        | 2,411.16       | CLEARED      | C     | 1/02/2018  |
| 1010                               | 12/29/2017 | DEPOSIT  | 000002 | REGULAR DAILY POST 12/29/2017 | 2,065.05       | CLEARED      | C     | 1/02/2018  |
| <b>MISCELLANEOUS:</b>              |            |          |        |                               |                |              |       |            |
| 1010                               | 12/08/2017 | MISC.    |        | PAYROLL DIRECT DEPOSIT        | 22,998.80CR    | CLEARED      | P     | 12/08/2017 |
| 1010                               | 12/22/2017 | MISC.    |        | PAYROLL DIRECT DEPOSIT        | 23,837.88CR    | CLEARED      | P     | 12/22/2017 |
| <b>SERVICE CHARGE:</b>             |            |          |        |                               |                |              |       |            |
| 1010                               | 12/04/2017 | SERV-CHG |        | NOV. 2017 ETS FEES            | 1,049.73CR     | CLEARED      | G     | 12/04/2017 |
| 1010                               | 12/04/2017 | SERV-CHG | 000001 | NOV. 2017 ETS FEES            | 910.93CR       | CLEARED      | G     | 12/04/2017 |
| 1010                               | 12/04/2017 | SERV-CHG | 000002 | NOV. 2017 ETS FEES            | 410.52CR       | CLEARED      | G     | 12/04/2017 |
| 1010                               | 12/18/2017 | SERV-CHG |        | NOVEMBER 2017 ANALYSIS FEES   | 308.32CR       | CLEARED      | G     | 12/15/2017 |
| <b>TOTALS FOR ACCOUNT 1010</b>     |            |          |        | CHECK                         | TOTAL:         | 468,138.15CR |       |            |
|                                    |            |          |        | DEPOSIT                       | TOTAL:         | 253,248.22   |       |            |
|                                    |            |          |        | INTEREST                      | TOTAL:         | 0.00         |       |            |
|                                    |            |          |        | MISCELLANEOUS                 | TOTAL:         | 46,836.68CR  |       |            |
|                                    |            |          |        | SERVICE CHARGE                | TOTAL:         | 2,679.50CR   |       |            |
|                                    |            |          |        | EFT                           | TOTAL:         | 0.00         |       |            |
|                                    |            |          |        | BANK-DRAFT                    | TOTAL:         | 23,051.19CR  |       |            |
| <b>TOTALS FOR POOLED CASH FUND</b> |            |          |        | CHECK                         | TOTAL:         | 468,138.15CR |       |            |
|                                    |            |          |        | DEPOSIT                       | TOTAL:         | 253,248.22   |       |            |
|                                    |            |          |        | INTEREST                      | TOTAL:         | 0.00         |       |            |
|                                    |            |          |        | MISCELLANEOUS                 | TOTAL:         | 46,836.68CR  |       |            |
|                                    |            |          |        | SERVICE CHARGE                | TOTAL:         | 2,679.50CR   |       |            |
|                                    |            |          |        | EFT                           | TOTAL:         | 0.00         |       |            |
|                                    |            |          |        | BANK-DRAFT                    | TOTAL:         | 23,051.19CR  |       |            |



**HIDDEN VALLEY LAKE COMMUNITY SERVICES DISTRICT  
 DECEMBER 2017  
 FINANCIAL REPORT**

**CAPITAL EXPENDITURES  
 2017 - 2018 BUDGET**

| Sewer   | Budget            | Yr to Date Actual |
|---|-------------------|-------------------|
| Repair Sewer Lateral Leaks                        | 40,000.00         |                   |
| Preliminary Design-Chlorine Disinfection Facility | 45,000.00         |                   |
| Install Security Fencing at Lift Station 1 & 4    | 10,000.00         |                   |
| Chlorine Tank Auto shut-off                       | 32,000.00         |                   |
| <b>Total</b>                                      | <b>127,000.00</b> | <b>-</b>          |

| Water   | Revenue        | Yr to Date Actual |
|---|----------------|-------------------|
| FUND 320 Water Use Capital (7% Water Use Revenue) | 106,000        | 58,966            |
|   |                |                   |
|   |                |                   |
| <b>Total</b>                                      | <b>106,000</b> | <b>58,966</b>     |

# MEMO

To: Board of Directors

From: Marty Rodriguez

Date: 01/12/2018

RE: Senior Account Representative's Monthly Report

---

## **Monthly Billing 12/29/2018**

Mailed statements: 2,149

Electronic statements: 435

The statement "SPECIAL MESSAGE"

Reflected on this bill, the FY 2017/2018 rates apply. The new volumetric rate is \$.0230 per cubic foot as listed on the reverse side of this bill. The District office will be closed from 12pm – 1pm on the 3<sup>rd</sup> Wednesday of each month.

## **Delinquent Billing 12/20/2017**

Delinquent statements for November bills:

Mailed statements: 472

Electronic statements: 85

## **Courtesy Notification 01/09/2018**

Courtesy notices delivered to the customer's property for delinquent November bill: 150

Electronic notices: 29

## **Phone Notification 01/10/2018**

Phone notifications: 98

The phone notification was sent out around 10:30 am resulting in 69 payments received by the office staff during business hours.

## **Lock Offs 01/11/2018**

29 Customers were in the Lock Off Process at 5:00 pm on 01/10/2018.

16 payments were made before service orders went out in the field at 9:00 am on 01/11/2018.

A total of 13 customers were Locked Off for nonpayment.

Throughout Lock off day 6 payments were collected and meters unlocked.

At the time of this report only 7 meters remain locked.



# Hidden Valley Lake Community Services District

## December 2017 Report

F  
I  
L  
L  
D  
O  
P  
E  
R  
A  
T  
I  
O  
N  
S

| <b>Water Connections:</b>    |             | <b>Sewer Connections:</b>    |             |
|------------------------------|-------------|------------------------------|-------------|
| New (December)               | 0           | New (December)               | 0           |
| Residential (November)       | 2440        | Residential (November)       | 1466        |
| Commercial & Govt (November) | 39          | Commercial & Govt (November) | 15          |
| <b>Total (November) :</b>    | <b>2479</b> |                              | <b>1481</b> |

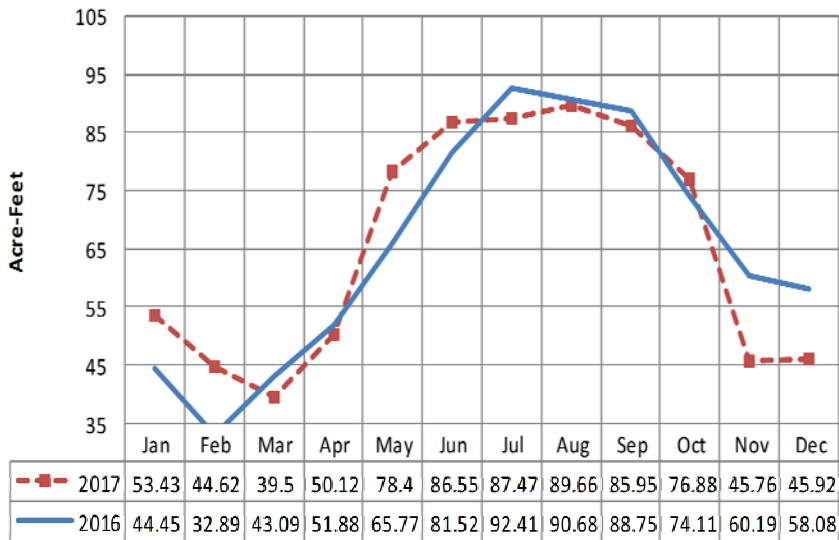
| <b>Rainfall</b>   |                  |                   |
|-------------------|------------------|-------------------|
| <i>This month</i> | <i>Last year</i> | <i>Historical</i> |
| 0                 | 7.59             | 9.71              |

| <b>Groundwater Elevation</b> |                   |                  |                   |
|------------------------------|-------------------|------------------|-------------------|
| <i>Monitoring Wells</i>      | <i>This month</i> | <i>Last year</i> | <i>Historical</i> |
| Prod Wells                   | 918.43            | 932.82           | 927.53            |
| AG                           | 932.62            | OOS              | 927.43            |
| TP Wells                     | 947.75            | 955.02           | 951.10            |
| Grange Rd                    | 936.18            | 936.72           | 937.03            |
| American Rock                | 968.48            | 973.39           | 969.98            |
| Spyglass                     | 963.86            | 970.03           | 965.67            |
| Luchetti                     | 921.81            | 925.31           | 922               |
| 18th T                       | 940.61            | 945.44           | 941.56            |

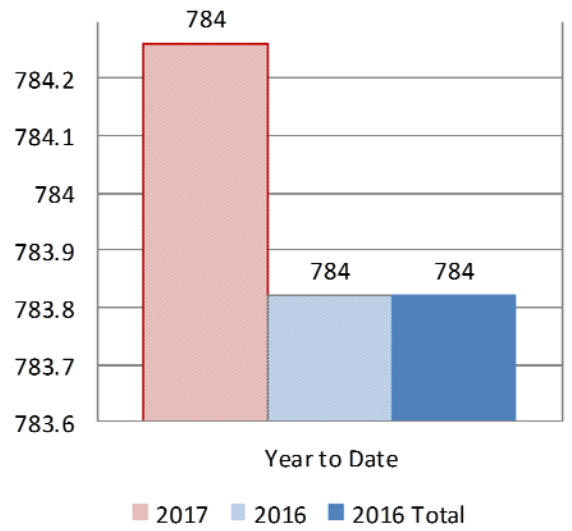
| <b>Completed Service Orders</b> |             |                   |
|---------------------------------|-------------|-------------------|
| <i>This month</i>               | <i>YTD</i>  | <i>Last Year</i>  |
| 139                             | 1292        | 1230              |
| <b>Overtime Hours</b>           | <b>61.5</b> | <b>\$1,907.21</b> |

# December 2017 Field Report

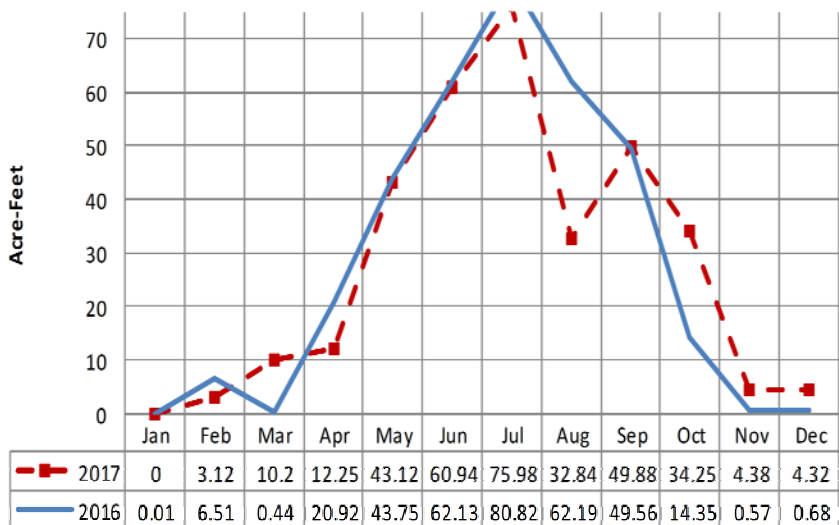
## HVLCS Municipal Well Production



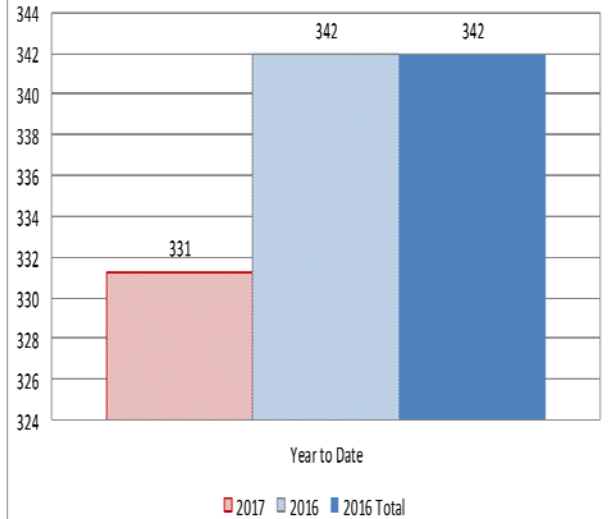
## HVLCS Municipal Well Production



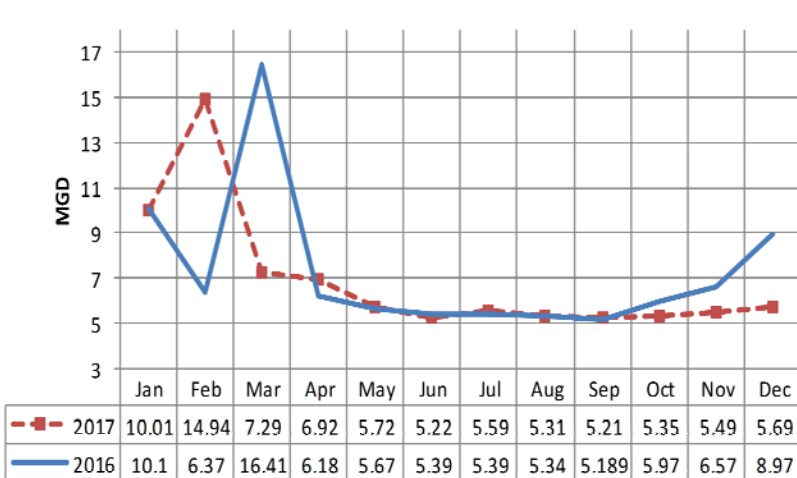
## HVLCS Municipal Reclaimed Water Use



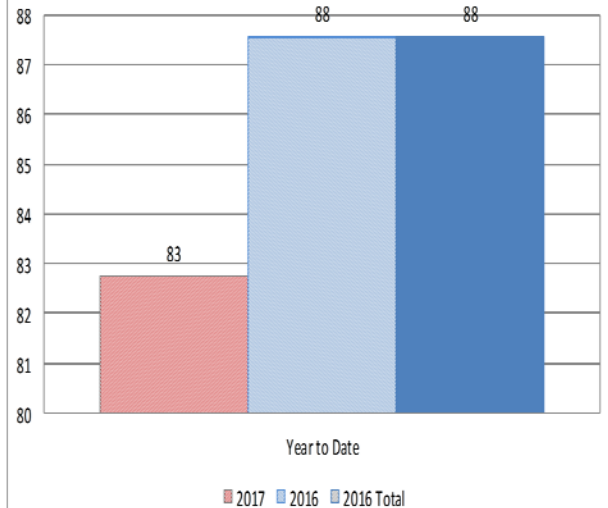
## HVLCS Municipal Reclaimed Water



## HVLCS Municipal Wastewater Influent



## HVLCS Municipal Wastewater Influent





## FEMA Projects Update

- I/I Workplan
  - Added old sewer manhole data to full mh documentation
  - Completed sewer cleanout sub-project
  - Temporary flow meters installed and gathering data
  - Developing I/I Result document
  - Planning next nighttime reconnaissance
- Road & Levee Repair
  - Gregg Simpson trucking began work 12/11
  - Gregg Simpson trucking completed work 12/22, except for backordered equipment to be installed by electrical sub-contractor.
- Revised Water Balance Report
  - Completion deadline extended to 1/30/2018
  - Reviewed/Discussed additional funding needs to complete report
- FEMA Q & A Panel
  - HVLCSD presentation at SWRCB sponsored event to assist Sonoma County water agencies recently affected by wildfire
- LHMP
  - Developed 5 Hazard Mitigation worksheets to be included in the County's LHMP
  - Provided feedback on first draft of document.

# December 2017 Field Report

## Water Operations and Maintenance Highlights

- 12/5,12/7 Courtesy notices, lockoffs
- 12/5 Install ball valve at Community Center
- 12/6 Wonderware Historian training
- 12/11, 12/12 Cold water repairs to well field
- Troubleshooting sonar for AG & Well 2
- 12/28 Cleaning WTP yard area
- Troubleshooting data usage at Plant
- 12/26-12/29 Meter reads
- Routine operations and maintenance

## Wastewater Operations and Maintenance Highlights

- 12/5,12/7 Courtesy notices, lockoffs
- 12/1 Sewer cleanout
- 12/11 Sludge bed maintenance
- 12/13 Repairs to LS3 P2
- 12/20 Sewer jet to LS7
- 12/20 Sewer cleanout
- 12/21, 12/29 Repaired Cl2 analyzer with full calibration
- Building 1-ton tie-down straps
- Repairs to LS6
- Headworks cleaning
- Rebuilding Blower #3
- Troubleshooting solar inverter repair
- Working on EHS RMP revision requests
- Regular maintenance and operations
- 12/26-12/29 Meter reads

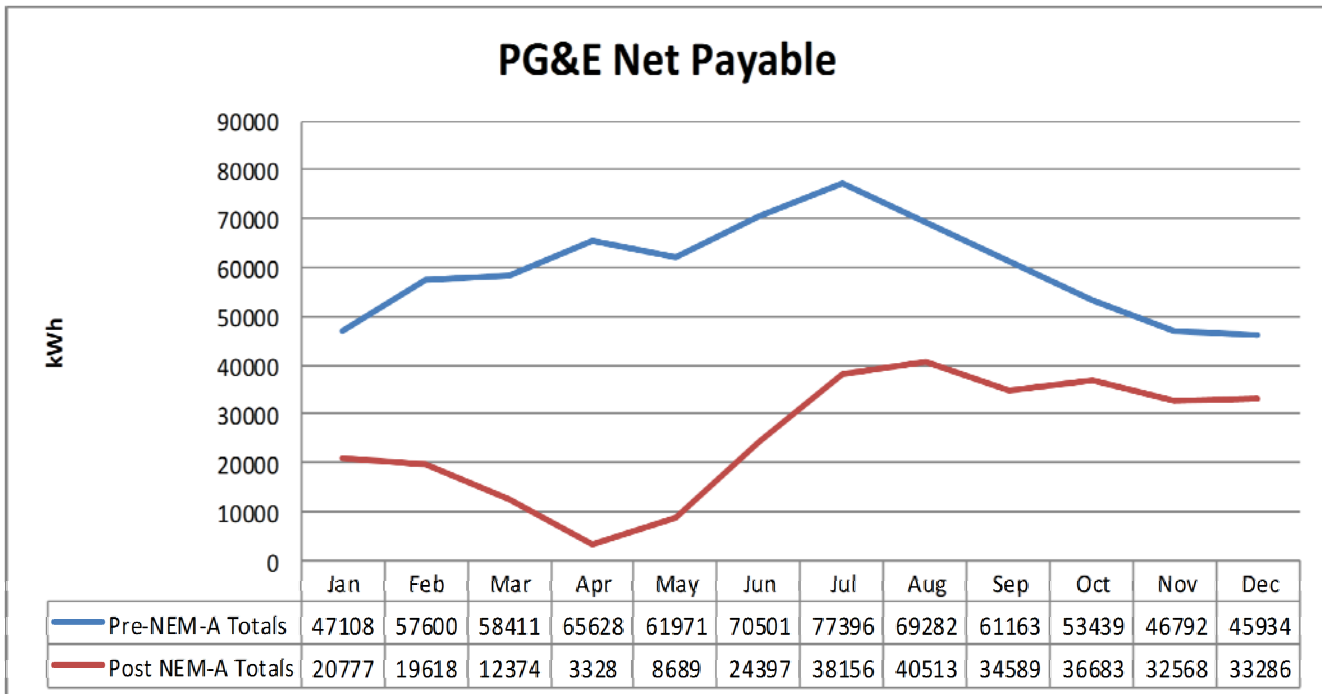


# December 2017 Field Report

| Vehicle Mileage |         |
|-----------------|---------|
| Vehicle         | Mileage |
| Truck 1         | 277     |
| Truck 3         | 2370    |
| Truck 4         | 316     |
| Truck 6         | 537     |
| Truck 7         | 2480    |
| Truck 8         | 402     |
| Dump Truck      | 176     |
| Backhoe         | 2.5     |

| Fuel Tank Use       |          |         |
|---------------------|----------|---------|
|                     | Gasoline | Diesel  |
| Tank Meter          | 95841.7  | 21001.9 |
| Fuel Log            | 347.9    | 69.4    |
| December Tank Level | 48.91    | 347.83  |
| November Tank Level | 342.39   | 347.93  |

| Vehicle Maintenance |                  |       |
|---------------------|------------------|-------|
| Vehicle             | Type of activity | Time  |
| Truck #8            | Fuel tank repair | 4 hrs |





# Hidden Valley Lake Community Services District

19400 Hartmann Road  
Hidden Valley Lake, CA 95467  
707.987.9201  
707.987.3237 fax  
www.hvicsd.org

## MEMO

To: Board of Directors  
From: Kirk Cloyd  
Date: January 23, 2018  
RE: General Manager's Monthly Report

---

Good evening and Happy New Year. The following report discusses items Hidden Valley Lake CSD completed over the past **two months** as a computer issue led to a very light G.M. report for December 2017. This report is intended to provide the Board and public with an update on the progression of projects and current status of relevant issues.

### Water

1. Moratorium update: The Regional Water Quality Control Board, Santa Rosa office has forwarded our permit to Stefan Cajina, Program Chief for the State Water Resources Control Board-Region II for review and comment. I spoke with Mr. Cajina and he does not have any questions about the District's approach to the meter moratorium, however, he let me know that Ms. Jule Rizzardo, Assistant Deputy Director of the Water Rights, Permitting & Enforcement Branch at the State Water Board is considering a different approach. According to Mr. Cajina, Ms. Rizzardo is considering a review of all affected agencies to determine if moratoriums should be lifted. He was not sure if this was on an individual basis or as a whole since the drought had been lifted or if the review and decision would be delegated to the Regional Boards. I have left three messages for Ms. Rizzardo over the last few weeks that have gone unanswered. We will continue to attempt to discuss this issue with Ms. Rizzardo.

Currently, the District is compiling the data and developing a web page on our Website that will chronical all actions taken to date so the public can be brought up to date and remain informed as this issue progresses.

2. Staff drafted an internal policy for the rental and usage of Construction Meters (AKA: T-meters, Temporary meters & hydrant meters). This will protect the District from lost or stolen Construction Meters which cost approx. \$1,400.00 to replace.

### Sanitary Sewer

1. The General Manager contacted Lars Ewing of Lake County to discuss repairs of the RWRf access road. The County has a construction company under contract to begin the work Monday January 8, 2018, weather permitting.



# Hidden Valley Lake Community Services District

19400 Hartmann Road  
Hidden Valley Lake, CA 95467  
707.987.9201  
707.987.3237 fax  
www.hvicsd.org

2. Equipment failure at the RWRF solar array revealed that the District's service provider failed to renew the contract when instructed to, therefore there is no contract to share with the Directors as requested. The contractor has ordered the parts and will schedule repairs once the parts arrive. The District will contract with the manufacture of the solar array for remote monitoring in-lieu of the third-party contract established by "Real Goods." The removal of the "middleman" is expected to save the District a small amount in contractual costs, however, the real benefit would be response time, equipment oversight and follow-through with contractual agreements.
3. The contractor completed the paving of the RWRF roadway inside the fence line. Repairs to the damaged electrical lines have been completed and the gate and recycled water pumps are fully operational. The contractor needs to purchase & place the new lids to the pull boxes before the project can be closed out.

## **Stormwater**

1. As of 1-3-18 the Guenoc Gauging Station on Putah Creek showed 21.1 CFS as a pre-storm flow.
2. No flooding was noted within District boundaries.

## **Human Resources**

1. A meeting with the Personnel Committee took place to present the draft Employee Handbook for review. Follow-up meetings will be scheduled for any modifications and staff will have the opportunity to review the Employee Handbook to ensure their thoughts/concerns are heard before it is presented to the full Board for approval.
2. CPS HR Consulting has completed the draft District salary survey. Staff has been asked to review the positions & job descriptions their positions are being related to in order to ensure we have buy-in at every level and current job duty comparisons are accurately related to like positions at other agencies. Once this is complete, the Finance & Personnel Committees will be asked to review the same documentation prior to proceeding to the next step.

## **Facilities**

1. Staff has inventoried the e-waste equipment stored in the server room. The next step is to clean, organize and inventory the garage at the Admin. building followed by moving all e-waste to the garage. Once the server room is cleaned and organized, repairs will be made to remove the black mold left from last year's leaking roof.
2. All e-waste will be processed to ensure that no personal or account data is left and then donated to an e-waste collection facility.



## Hidden Valley Lake Community Services District

19400 Hartmann Road  
Hidden Valley Lake, CA 95467  
707.987.9201  
707.987.3237 fax  
www.hvicsd.org

3. The above work is in preparation for the eventual demo of the garage to make room for an enlarged, welded steel blending tank to replace the Redwood tank.
4. A second structure is slated for demo. A structure over a booster pump that has been removed on Knollview Dr. (The Association has asked that we reroof the building should we choose to keep it.)

### **Vehicles & Equipment**

1. A resident backed into a District truck (Unit 3). Repair estimates have been received from the SDRMA's adjuster. The District is scheduling this truck for repair. Since the resident backed into a parked vehicle, SDRMA will bill them for all repairs.

### **General Information**

1. District staff spoke with Gary Hall, G.M. of Lake Pillsbury Water Agency and discussed HVLCSD's approach to the replacement of wood tanks. Included was a discussion of the FEMA Hazardous Mitigation and SRF Loan processes. They would like to follow in a similar fashion.
2. The Konocti Conservation Crew #27 dropped trees damaged by the Valley Fire, on Dallas Ct. property. The District has obtained a burn permit and weather permitting, the Konocti Fire Crew will conduct dropping trees of concern and conduct a controlled burn.
3. The General Manager attended the Lake County Amateur Radio Society (LCARS) meeting. The group agreed to consider having a booth at the annual HVL Firewise Community Event in May 2018 along with a booth from the District.
4. The Crazy Creek Air Adventures property sold October 6, 2017 to Garden RD LLC out of Scarsdale NY. The District is attempting to contact the new owner to discuss closure of the RWRF access road to through traffic.
5. Verizon Tower Update: Verizon representatives continue to work with District staff and our District Attorney to draft an agreement for rental of property. It is believed that we are nearing an agreement that can be presented to our Board in the next few months.

### **Emergency Preparedness**

1. A meeting did not taken place this month. Once committee members are identified in the January Board meeting, a meeting will be scheduled to discuss goals, plans and funding for 2018.

**ACTION OF  
HIDDEN VALLEY LAKE COMMUNITY SERVICES DISTRICT**

**DATE:** January 23, 2018

**AGENDA ITEM:** Discussion and Possible Approval of the General Manager to enter into a contract amendment with GHD to complete the Water Balance Report Revision as required by the Central Valley Regional Water Quality Control Board

---

**RECOMMENDATIONS:** Approve the General Manager to enter into a contract amendment with GHD to complete the Water Balance Report Revision as required by the Central Valley Regional Water Quality Control Board, not to exceed \$9,696.00

---

**FINANCIAL IMPACT: \$9,696.00**

Project expenditures to date:

\$22,911.00 Water Balance Report  
\$27,288.00 Water Balance Report Revision

=====

\$50,199.00

The contract amendment to the Water Balance Revision would bring this project total to:

\$59,895.00

---

**BACKGROUND:**

In a letter dated 7/11/2017, the Central Valley Regional Water Quality Control Board requested a revision of the Water Balance report. GHD was contracted to complete this work at the September board meeting (9/19/2017). Upon further review, GHD has discovered that additional work beyond the original contract scope is required to complete this Water Balance Report revision. GHD has submitted the following explanation:

*“Based on our review of pump run hours and then by obtaining the new Parshall Flume data it became apparent that there was additional work necessary to fully understand the flows, update our assumptions and make projections to complete the analysis. Based on the work to complete the additional revisions to update the revisions to the Water Balance Report and provide credible information back to the RWQCB it also became apparent that the work is far more complex than originally envisioned with our initial scope which was based on the RWQCB response. This is mainly due to using pump run hour data and comparing to the new Parshall Flume data to develop credible flow values into the WWTP from the system. Because of this we have expended more hours than originally budgeted and have more work to complete that is necessary to come to credible conclusions. The work we have completed and are now outside of our original scope/fee has included and the additional work is:*

- *New Iterations for estimating flow based on 700 & 701 pumps flowing into the EQ basin. This has included a new pump curve and analysis for adding filter reject water to the flow and utilization of run hours to be incorporated into the analysis. We weren't aware of the filter reject water recycling back into the flow with the EQ lift station until last week.*
- *Incorporating rainfall data from the treatment plant when previously using CIMIS data from the closest station in the Napa Valley.*
- *Installation of the flume and receipt of the flume data was incorporated into the analysis. Since the run hours compared to the flume data give more accuracy, we processed the flume data and are comparing the flow from run hours on the three pumps. This is taking time and we will likely recommend that an update be included next year after more data is collected.*
- *Analyzing results on three pump run hours for the same dates as Parshall Flume (Oct 26-present for 2017). Information regarding LS EQ flows with VFD percentage differences has created adjustments for more accurate data in EQ LS sizing. We have now also updated the spreadsheet to include more current data and this affects our overall analysis, assumptions and conclusions.*
- *Adjusting the revised report which includes new results and recommendations. We had previously worked on the write up before receiving the above referenced information and will modify the report to reflect the new data related to the flume.*

*Based on the work completed to date and our assumptions for completing the analysis we are requesting an Amendment to our contract in the amount of \$9,696 as shown in the attached fee estimate to cover the additional work.*

The fee estimate follows this document.

APPROVED  
AS RECOMMENDED

OTHER  
(SEE BELOW)

Modification to recommendation and/or other actions:

I, Kirk Cloyd, Secretary to the Board, do hereby certify that the foregoing action was regularly introduced, passed, and adopted by said Board of Directors at a regular board meeting thereof held on January 23, 2018 by the following vote:

Ayes:

Noes:

Abstain:

Absent

Secretary to the Board



## Revised Water Balance Report

PROJECT NAME: Hidden Valley Lake CSD RWQCB NOV Assistance

PROJECT NUMBER:

Estimated by: Alex Culick

**12/15/2017**

|  | GHD            |                 |                  |            |            |           | Indirect Costs | FEE            | Total Fee      |
|--|----------------|-----------------|------------------|------------|------------|-----------|----------------|----------------|----------------|
|  | Culick         | Winkelman       | Philbert         | Bach       | Clerical   | HOURS     |                |                |                |
|  | Principal      | Senior Engineer | Project Engineer | CAD        | Admin      |           |                |                |                |
| <b>Task Description</b>                      | \$ 250         | \$ 210          | \$ 130           | \$ 130     | \$ 110     |           |                |                |                |
| <b>Task 3 - Revised Water Balance Report</b> |                |                 |                  |            |            |           |                |                |                |
| Water Balance Report                         | 4              |                 | 56               |            |            | 60        | \$360          | \$8,640        | \$8,640        |
| Finalize Report                              | 2              |                 | 4                |            |            | 6         | \$36           | \$1,056        | \$1,056        |
|  |                |                 |                  |            |            |           |                | <b>\$9,696</b> |                |
| <b>TOTAL HOURS ALL TASKS</b>                 | <b>6</b>       | <b>0</b>        | <b>60</b>        | <b>0</b>   | <b>0</b>   | <b>66</b> |                |                |                |
| <b>TOTAL FEE ALL TASKS</b>                   | <b>\$1,500</b> | <b>\$0</b>      | <b>\$7,800</b>   | <b>\$0</b> | <b>\$0</b> |           | <b>\$396</b>   | <b>\$9,696</b> | <b>\$9,696</b> |

**ACTION OF  
HIDDEN VALLEY LAKE COMMUNITY SERVICES DISTRICT**

**DATE:** January 23, 2018

**AGENDA ITEM:** DISCUSSION AND POSSIBLE ACTION: Election of Board President and Board Vice President for 2018 Calendar Year

---

**RECOMMENDATIONS:**

- 1) Elect Board President for 2018 Calendar Year
- 2) Elect Board Vice President for 2018 Calendar Year

**FINANCIAL IMPACT:**

None

**BACKGROUND:**

Each January the Board designates two individuals to serve as the Board’s President and Vice President, respectively, for the balance of the calendar year.

---

APPROVED  
AS RECOMMENDED

OTHER  
(SEE BELOW)

---

Modification to recommendation and/or other actions:

---

I, Kirk Cloyd, Secretary to the Board, do hereby certify that the foregoing action was regularly introduced, passed, and adopted by said Board of Directors at a regular board meeting thereof held on January 23, 2018 by the following vote:

Ayes:

Noes:

Abstain:

Absent

\_\_\_\_\_  
Secretary to the Board



**ACTION OF  
HIDDEN VALLEY LAKE COMMUNITY SERVICES DISTRICT**

**DATE:** January 23, 2018

**AGENDA ITEM:** Discussion and Possible Action: Assignment of Board Members to standing committees for 2018 calendar year

---

**RECOMMENDATIONS:**

Assign two Board members to each of the following three Board committees: Finance, Personnel, Security and Disaster Preparedness Program, for the 2018 calendar year.

**FINANCIAL IMPACT:**

None

**BACKGROUND:**

Each January the Board President assigns two Board members to each of the following three Board committees; Finance, Personnel, Security and Disaster Preparedness Program. In 2017 the committee assignments were as follows:

- Finance – Directors Mirbegian and Graham
  - Personnel – Directors Herndon and Freeman
  - Security and Disaster Preparedness Program – Director Lieberman
- 

APPROVED  
AS RECOMMENDED

OTHER  
(SEE BELOW)

---

Modification to recommendation and/or other actions:

---

I, Kirk Cloyd, Secretary to the Board, do hereby certify that the foregoing action was regularly introduced, passed, and adopted by said Board of Directors at a regular board meeting thereof held on January 23, 2018 by the following vote:

Ayes:

Noes:

Abstain:

Absent

\_\_\_\_\_  
Secretary to the Board